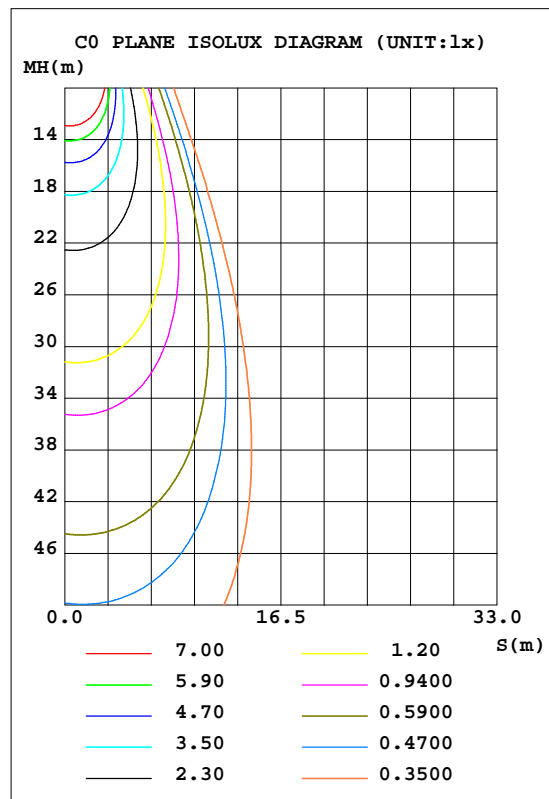
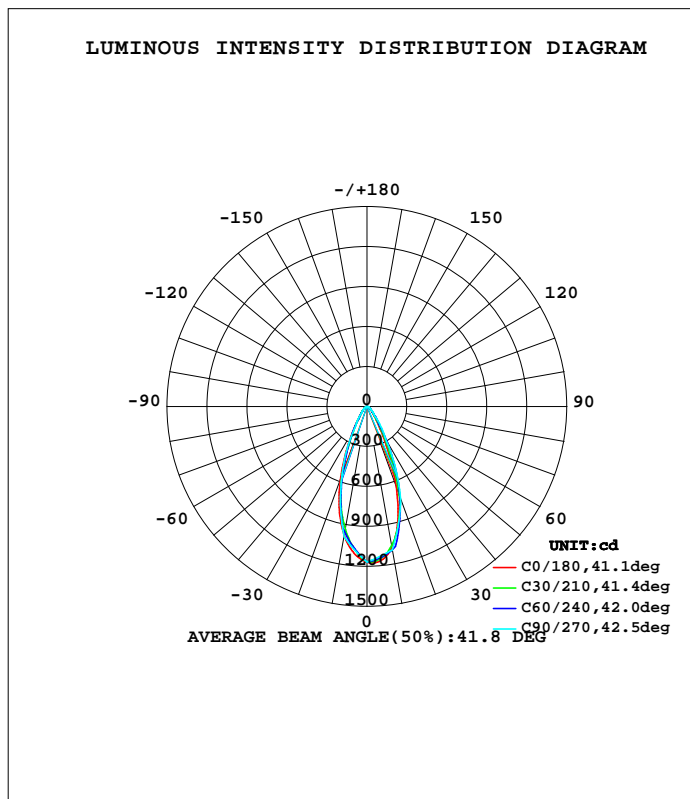


LUMINAIRE PHOTOMETRIC TEST REPORT

Test:U:230.3V I:0.0378A P:8.004W PF:0.9184 Lamp Flux:694.09x1 lm		
NAME: 压铸铝8w单色可调	TYPE:	WEIGHT:
SPEC.:	DIM.:	SERIAL No.:001
MFR.: EVERFINE	SUR.:0.001256	PROTECTION ANGLE:

DATA OF LAMP		PHOTOMETRIC DATA				Eff: 86.72 lm/W
MODEL	5RS015-31(1)	I _{max} (cd)	1174	S/MH(C0/180)	0.66	
NOMINAL POWER(W)	8	LOR(%)	100.0	S/MH(C90/270)	0.72	
RATED VOLTAGE(V)	230	TOTAL FLUX(lm)	694.09	h UP, DN(C0-180)	0.0, 54.2	
NOMINAL FLUX(lm)	694.09	CIE CLASS	DIRECT	h UP, DN(C180-360)	0.0, 45.8	
LAMPS INSIDE	1	h up(%)	0.0	CIBSE SHR NOM	0.50	
TEST VOLTAGE(V)	230.3	h down(%)	100.0	CIBSE SHR MAX	0.65	



C Range: 0 - 360DEG
 C Interval: 5.0DEG
 Test Speed: HIGH
 Temperature:25.3DEG
 Operators:DAMIN
 Test Date:2016-06-21

Range: 0 - 90DEG
 Interval: 0.5DEG
 Test System:EVERFINE GO-2000B_V1 SYSTEM V2.0.279
 Humidity:65.0%
 Test Distance:9.130m [K=1.0000]
 Remarks:

ZONAL FLUX DIAGRAM

ZONAL FLUX DIAGRAM:

g	C0	C45	C90	C135	C180	C225	C270	C315	g	F zone	F total	%lum,lamp
5	1162	1143	1130	1104	1106	1071	1080	1106	0- 5	27.08	27.08	3.9,3.9
10	1077	1077	1092	1010	984.9	942.0	992.0	1000.0	5- 10	75.98	103.1	14.8,14.8
15	896.5	944.8	915.5	869.0	805.2	769.4	769.7	830.4	10- 15	110.2	213.2	30.7,30.7
20	646.3	707.6	738.9	646.2	586.7	532.5	547.5	576.4	15- 20	119.6	332.8	47.9,47.9
25	391.6	465.8	508.7	430.7	369.9	326.9	360.7	345.1	20- 25	105.6	438.4	63.2,63.2
30	210.2	272.5	278.5	257.8	208.1	189.7	173.8	193.5	25- 30	77.22	515.6	74.3,74.3
35	117.7	151.6	183.1	145.9	117.2	111.0	119.2	113.2	30- 35	49.99	565.6	81.5,81.5
40	75.25	86.05	87.66	83.84	73.71	66.81	64.54	68.89	35- 40	33.75	599.3	86.3,86.3
45	52.41	60.24	65.08	57.79	50.89	48.26	49.27	49.77	40- 45	23.80	623.1	89.8,89.8
50	38.24	42.28	42.50	40.32	36.64	34.64	33.99	36.02	45- 50	18.44	641.6	92.4,92.4
55	29.14	32.45	33.19	30.56	27.45	26.35	26.07	27.60	50- 55	14.54	656.1	94.5,94.5
60	21.86	24.29	23.89	22.38	20.17	19.27	18.15	20.26	55- 60	11.60	667.7	96.2,96.2
65	16.24	18.26	18.31	16.47	15.10	14.38	14.11	14.98	60- 65	9.006	676.7	97.5,97.5
70	11.93	13.37	12.73	12.00	11.03	10.46	10.07	10.84	65- 70	6.943	683.7	98.5,98.5
75	8.490	9.589	9.442	8.711	7.936	7.267	6.614	7.528	70- 75	5.161	688.8	99.2,99.2
80	4.997	6.196	6.158	5.681	4.754	4.120	3.153	4.247	75- 80	3.487	692.3	99.7,99.7
85	1.443	1.758	0	1.619	1.370	0.9439	0	0.9631	80- 85	1.654	694.0	100,100
90	0	0	0	0	0.0136	0	0	0	85- 90	0.1313	694.1	100,100
95									90- 95			
100									95-100			
105									100-105			
110									105-110			
115									110-115			
120									115-120			
125									120-125			
130									125-130			
135									130-135			
140									135-140			
145									140-145			
150									145-150			
155									150-155			
160									155-160			
165									160-165			
170									165-170			
175									170-175			
180									175-180			
DEG	LUMINOUS INTENSITY:cd									UNIT:lm		

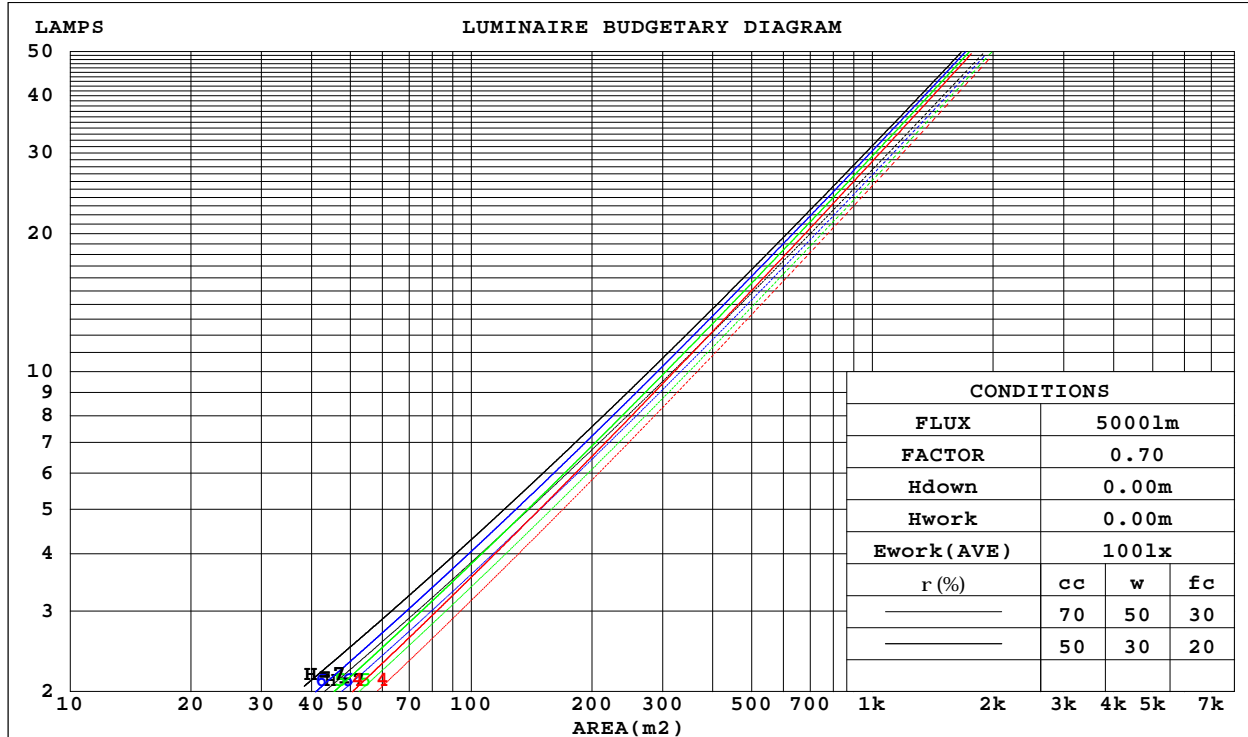
C Range: 0 - 360DEG
 C Interval: 5.0DEG
 Test Speed: HIGH
 Temperature:25.3DEG
 Operators:DAMIN
 Test Date:2016-06-21

g Range: 0 - 90DEG
 Interval: 0.5DEG
 Test System:EVERFINE GO-2000B_V1 SYSTEM V2.0.279
 Humidity:65.0%
 Test Distance:9.130m [K=1.0000]
 Remarks:

CU AND LUMINAIRE BUDGETARY ESTIMATE DIAGRAM

Test:U:230.3V I:0.0378A P:8.004W PF:0.9184 Lamp Flux:694.09x1 lm		
NAME: 压铸铝8w单色可调	TYPE:	WEIGHT:
SPEC.:	DIM.:	SERIAL No.:001
MFR.: EVERFINE	SUR.:0.001256	PROTECTION ANGLE:

r _{cc}	80%			70%			50%			30%			10%			0
r _w	50%	30%	10%	50%	30%	10%	50%	30%	10%	50%	30%	10%	50%	30%	10%	0
r _{fc}	20%			20%			20%			20%			20%			0
RCR	RCR:Room Cavity Ratio						Coefficients of Utilization(CU)									
0.0	1.19	1.19	1.19	1.16	1.16	1.16	1.11	1.11	1.11	1.06	1.06	1.06	1.02	1.02	1.02	1.00
1.0	1.10	1.08	1.05	1.08	1.06	1.04	1.04	1.02	1.01	1.00	.99	.98	.97	.96	.95	.93
2.0	1.02	.98	.95	1.01	.97	.94	.97	.94	.92	.94	.92	.90	.92	.90	.88	.86
3.0	.96	.90	.86	.94	.89	.86	.91	.88	.84	.89	.86	.83	.87	.84	.82	.80
4.0	.89	.84	.80	.88	.83	.79	.86	.82	.78	.84	.80	.77	.82	.79	.76	.75
5.0	.84	.78	.74	.83	.78	.74	.81	.77	.73	.80	.76	.72	.78	.75	.72	.70
6.0	.79	.73	.69	.79	.73	.69	.77	.72	.68	.76	.71	.68	.74	.71	.68	.66
7.0	.75	.69	.65	.74	.69	.65	.73	.68	.65	.72	.67	.64	.71	.67	.64	.62
8.0	.71	.65	.61	.71	.65	.61	.70	.65	.61	.69	.64	.61	.68	.64	.60	.59
9.0	.68	.62	.58	.67	.62	.58	.66	.61	.58	.65	.61	.58	.65	.60	.57	.56
10.0	.65	.59	.55	.64	.59	.55	.63	.58	.55	.63	.58	.55	.62	.58	.55	.53



C Range: 0 - 360DEG
 C Interval: 5.0DEG
 Test Speed: HIGH
 Temperature:25.3DEG
 Operators:DAMIN
 Test Date:2016-06-21

Range: 0 - 90DEG
 Interval: 0.5DEG
 Test System:EVERFINE GO-2000B_V1 SYSTEM V2.0.279
 Humidity:65.0%
 Test Distance:9.130m [K=1.0000]
 Remarks:

WEC AND CCEC

Test:U:230.3V I:0.0378A P:8.004W PF:0.9184 Lamp Flux:694.09x1 lm		
NAME: 压铸铝8W单色可调	TYPE:	WEIGHT:
SPEC.:	DIM.:	SERIAL No.:001
MFR.: EVERFINE	SUR.:0.001256	PROTECTION ANGLE:

rcc	80%			70%			50%			30%			10%			0
r _w	50%	30%	10%	50%	30%	10%	50%	30%	10%	50%	30%	10%	50%	30%	10%	0
r _{fc}	20%			20%			20%			20%			20%			0
RCR	RCR:Room Cavity Ratio						Wall Exitance Coefficients(WEC)									
0.0																
1.0	.186	.106	.034	.180	.102	.033	.167	.096	.031	.155	.090	.029	.145	.084	.027	
2.0	.177	.097	.030	.171	.094	.029	.160	.089	.028	.151	.084	.026	.141	.080	.025	
3.0	.166	.089	.027	.162	.087	.026	.153	.083	.025	.144	.079	.024	.136	.075	.023	
4.0	.157	.081	.024	.153	.080	.024	.145	.077	.023	.137	.074	.022	.131	.071	.022	
5.0	.148	.075	.022	.144	.074	.022	.138	.072	.021	.131	.069	.021	.125	.067	.020	
6.0	.140	.070	.020	.137	.069	.020	.131	.067	.020	.125	.065	.019	.120	.063	.019	
7.0	.133	.066	.019	.130	.065	.018	.125	.063	.018	.120	.061	.018	.115	.060	.018	
8.0	.126	.062	.017	.124	.061	.017	.119	.060	.017	.115	.058	.017	.111	.057	.017	
9.0	.120	.058	.016	.118	.058	.016	.114	.056	.016	.110	.055	.016	.106	.054	.016	
10.0	.115	.055	.015	.113	.055	.015	.109	.054	.015	.106	.052	.015	.102	.051	.015	

rcc	80%			70%			50%			30%			10%			0
r _w	50%	30%	10%	50%	30%	10%	50%	30%	10%	50%	30%	10%	50%	30%	10%	0
r _{fc}	20%			20%			20%			20%			20%			0
RCR	RCR:Room Cavity Ratio						Ceiling Cavity Exitance Coefficients(CCEC)									
0.0	.190	.190	.190	.163	.163	.163	.111	.111	.111	.064	.064	.064	.020	.020	.020	
1.0	.172	.157	.144	.147	.135	.124	.101	.093	.086	.058	.054	.050	.019	.017	.016	
2.0	.157	.132	.112	.134	.114	.097	.092	.079	.067	.053	.046	.040	.017	.015	.013	
3.0	.145	.114	.089	.124	.098	.077	.085	.068	.054	.049	.040	.032	.016	.013	.010	
4.0	.134	.099	.072	.115	.085	.063	.079	.060	.044	.046	.035	.026	.015	.011	.009	
5.0	.125	.087	.059	.107	.076	.052	.074	.053	.037	.043	.031	.022	.014	.010	.007	
6.0	.117	.078	.050	.101	.068	.043	.070	.047	.031	.040	.028	.018	.013	.009	.006	
7.0	.111	.070	.042	.095	.061	.037	.066	.043	.026	.038	.025	.016	.012	.008	.005	
8.0	.104	.064	.036	.090	.056	.032	.062	.039	.022	.036	.023	.013	.012	.008	.004	
9.0	.099	.059	.032	.085	.051	.027	.059	.036	.020	.034	.021	.012	.011	.007	.004	
10.0	.094	.054	.028	.081	.047	.024	.056	.033	.017	.033	.020	.010	.011	.006	.003	

C Range: 0 - 360DEG
 C Interval: 5.0DEG
 Test Speed: HIGH
 Temperature:25.3DEG
 Operators:DAMIN
 Test Date:2016-06-21

g Range: 0 - 90DEG
 Interval: 0.5DEG
 Test System:EVERFINE GO-2000B_V1 SYSTEM V2.0.279
 Humidity:65.0%
 Test Distance:9.130m [K=1.0000]
 Remarks:

Uncorrected UGR Table

Test:U:230.3V I:0.0378A P:8.004W PF:0.9184 Lamp Flux:694.09x1 lm										
NAME: 压铸铝8W单色可调					TYPE:			WEIGHT:		
SPEC.:					DIM.:			SERIAL No.:001		
MFR.: EVERFINE					SUR.:0.001256			PROTECTION ANGLE:		
ceiling/cavity	0.7	0.7	0.5	0.5	0.3	0.7	0.7	0.5	0.5	0.3
walls	0.5	0.3	0.5	0.3	0.3	0.5	0.3	0.5	0.3	0.3
working plane	0.2	0.2	0.2	0.2	0.2	0.2	0.2	0.2	0.2	0.2
Room dimensions	Viewed crosswise					Viewed endwise				
x = 2H y = 2H	22.3	23.3	22.5	23.4	23.6	23.2	24.1	23.4	24.3	24.5
3H	23.0	23.9	23.2	24.1	24.3	23.8	24.7	24.0	24.9	25.1
4H	23.3	24.1	23.6	24.3	24.6	24.1	24.9	24.4	25.1	25.3
6H	23.5	24.3	23.8	24.5	24.8	24.3	25.1	24.6	25.3	25.6
8H	23.6	24.3	23.9	24.6	24.9	24.4	25.1	24.7	25.4	25.6
12H	23.6	24.3	23.9	24.6	24.9	24.3	25.1	24.7	25.3	25.6
4H 2H	22.6	23.5	22.9	23.7	23.9	23.4	24.2	23.6	24.4	24.6
3H	23.5	24.2	23.8	24.5	24.8	24.2	24.9	24.5	25.2	25.4
4H	23.9	24.6	24.3	24.9	25.2	24.6	25.2	24.9	25.5	25.9
6H	24.3	24.8	24.6	25.2	25.5	25.0	25.5	25.3	25.9	26.2
8H	24.4	24.9	24.8	25.3	25.6	25.0	25.6	25.4	25.9	26.3
12H	24.4	24.9	24.8	25.3	25.7	25.0	25.5	25.4	25.9	26.3
8H 4H	24.1	24.6	24.5	25.0	25.4	24.7	25.3	25.1	25.6	26.0
6H	24.5	25.0	25.0	25.4	25.8	25.2	25.7	25.7	26.1	26.5
8H	24.7	25.1	25.2	25.5	26.0	25.3	25.7	25.8	26.2	26.6
12H	24.8	25.2	25.3	25.6	26.1	25.3	25.7	25.8	26.1	26.6
12H 4H	24.1	24.6	24.5	25.0	25.4	24.7	25.2	25.1	25.6	26.0
6H	24.6	25.0	25.0	25.4	25.8	25.2	25.6	25.7	26.1	26.5
8H	24.8	25.2	25.3	25.6	26.1	25.4	25.7	25.9	26.2	26.6
Variations with the observer position at spacings:										
S = 1.0H	+ 0.5 / - 0.7					+ 0.8 / - 0.9				
1.5H	+ 0.6 / - 0.5					+ 1.6 / - 0.8				
2.0H	+ 0.8 / - 0.9					+ 1.1 / - 0.7				

CIE Pub.117 Corrected 694.1 lm Total Lamp Luminous Flux.(8log(F/F0) = -1.3)

C Range: 0 - 360DEG
 C Interval: 5.0DEG
 Test Speed: HIGH
 Temperature:25.3DEG
 Operators:DAMIN
 Test Date:2016-06-21

g Range: 0 - 90DEG
 Interval: 0.5DEG
 Test System:EVERFINE GO-2000B_V1 SYSTEM V2.0.279
 Humidity:65.0%
 Test Distance:9.130m [K=1.0000]
 Remarks:

UTILIZATION FACTORS TABLE

Test:U:230.3V I:0.0378A P:8.004W PF:0.9184 Lamp Flux:694.09x1 lm		
NAME: 压铸铝8w单色可调	TYPE:	WEIGHT:
SPEC.:	DIM.:	SERIAL No.:001
MFR.: EVERFINE	SUR.:0.001256	PROTECTION ANGLE:

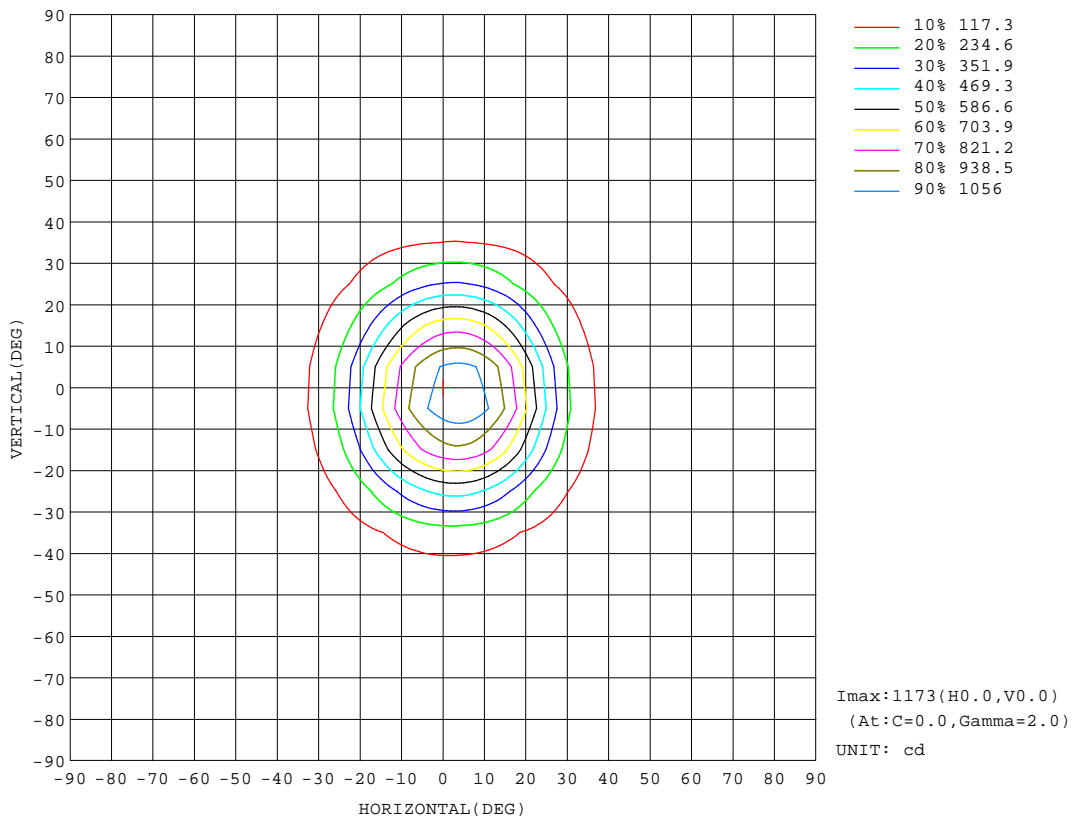
REFLECTANCE										
Ceiling	0.8	0.8	0.8	0.7	0.7	0.7	0.5	0.5	0.5	0
Walls	0.7	0.5	0.3	0.7	0.5	0.3	0.7	0.5	0.3	0
Working plane	0.2	0.2	0.2	0.2	0.2	0.2	0.2	0.2	0.2	0
ROOM INDEX	UTILIZATION FACTORS(PERCENT) k(RI) x RCR = 5									
k = 0.60	83	76	72	83	76	72	82	75	71	67
0.80	91	84	80	90	84	80	89	83	79	75
1.00	96	90	85	95	89	85	93	89	85	80
1.25	100	94	90	99	94	90	97	93	89	85
1.50	103	98	94	102	97	94	100	96	93	88
2.00	107	102	98	105	101	97	102	99	96	90
2.50	109	104	101	107	103	100	104	101	98	92
3.00	110	107	103	109	105	102	105	102	100	94
4.00	113	110	107	111	108	106	107	105	103	96
5.00	114	112	109	112	110	108	108	106	105	97
ROOM INDEX	UF(total)									Direct
According to DIN EN 13032-2 2004			Suspended				SHRNOM = 1.25			

C Range: 0 - 360DEG
 C Interval: 5.0DEG
 Test Speed: HIGH
 Temperature:25.3DEG
 Operators:DAMIN
 Test Date:2016-06-21

g Range: 0 - 90DEG
 Interval: 0.5DEG
 Test System:EVERFINE GO-2000B_V1 SYSTEM V2.0.279
 Humidity:65.0%
 Test Distance:9.130m [K=1.0000]
 Remarks:

ISOCANDELA DIAGRAM

Test:U:230.3V I:0.0378A P:8.004W PF:0.9184 Lamp Flux:694.09x1 lm		
NAME: 压铸铝8w单色可调	TYPE:	WEIGHT:
SPEC.:	DIM.:	SERIAL No.:001
MFR.: EVERFINE	SUR.:0.001256	PROTECTION ANGLE:



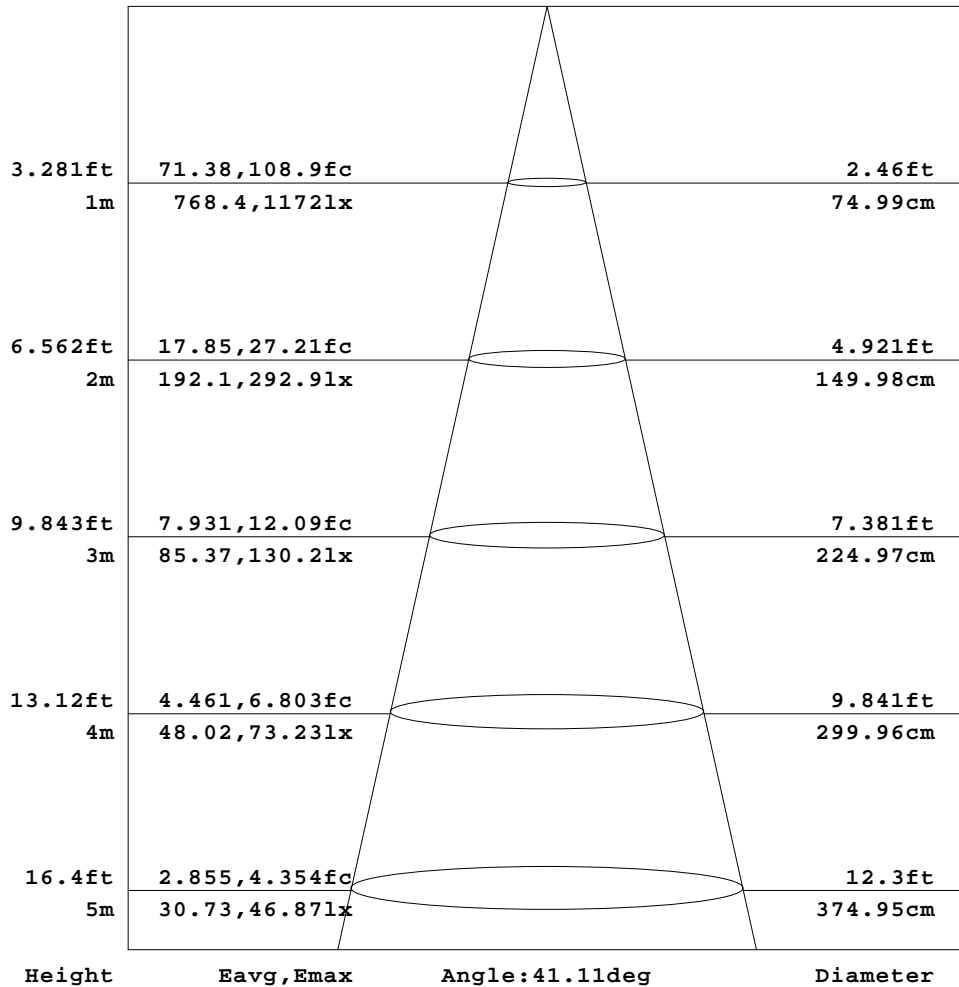
C Range: 0 - 360DEG
 C Interval: 5.0DEG
 Test Speed: HIGH
 Temperature:25.3DEG
 Operators:DAMIN
 Test Date:2016-06-21

Range: 0 - 90DEG
 Interval: 0.5DEG
 Test System:EVERFINE GO-2000B_V1 SYSTEM V2.0.279
 Humidity:65.0%
 Test Distance:9.130m [K=1.0000]
 Remarks:

AAI Figure

Test:U:230.3V I:0.0378A P:8.004W PF:0.9184 Lamp Flux:694.09x1 lm		
NAME: 压铸铝8w单色可调	TYPE:	WEIGHT:
SPEC.:	DIM.:	SERIAL No.:001
MFR.: EVERFINE	SUR.:0.001256	PROTECTION ANGLE:

Flux out:355.7 lm



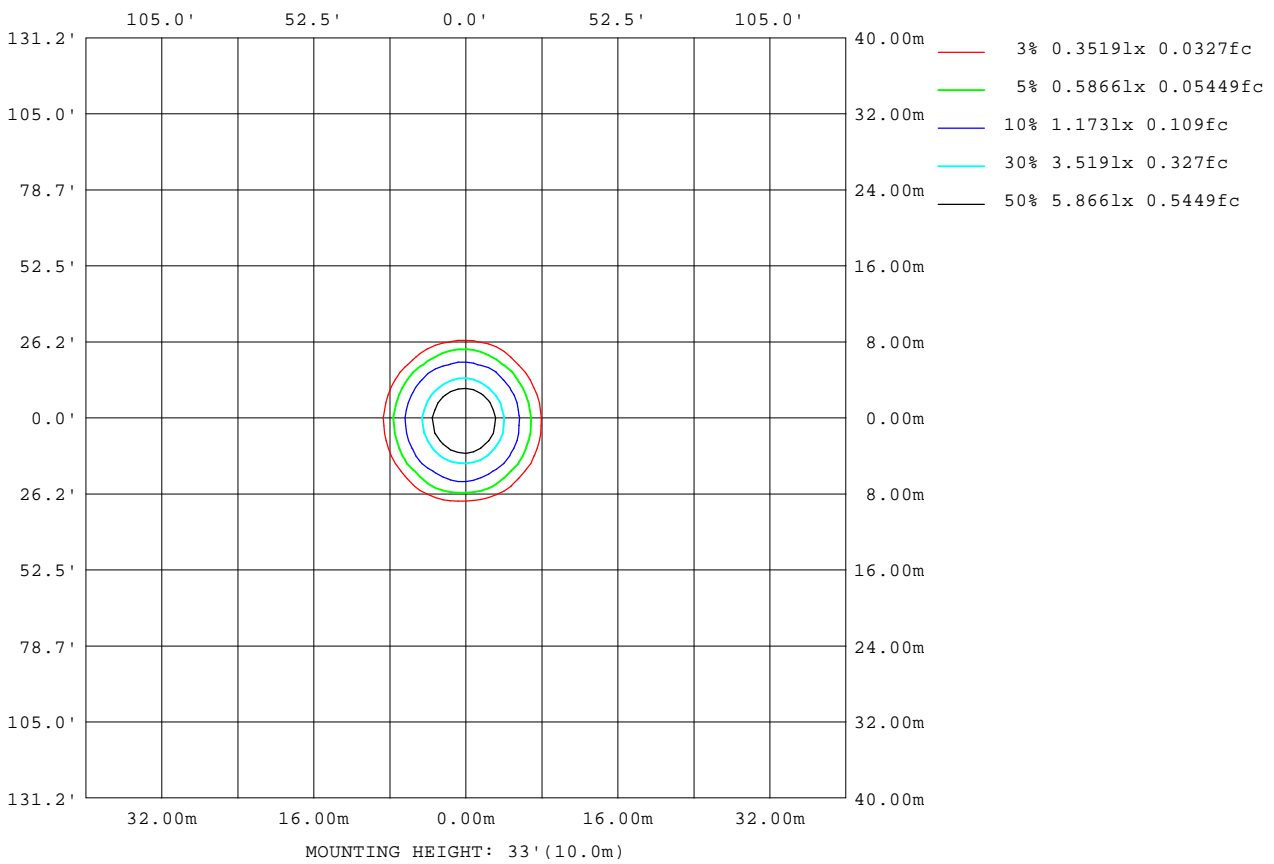
Note:The Curves indicate the illuminated area and the average illumination when the luminaire is at different distance.

C Range: 0 - 360DEG
 C Interval: 5.0DEG
 Test Speed: HIGH
 Temperature:25.3DEG
 Operators:DAMIN
 Test Date:2016-06-21

g Range: 0 - 90DEG
 Interval: 0.5DEG
 Test System:EVERFINE GO-2000B_V1 SYSTEM V2.0.279
 Humidity:65.0%
 Test Distance:9.130m [K=1.0000]
 Remarks:

ISOLUX DIAGRAM

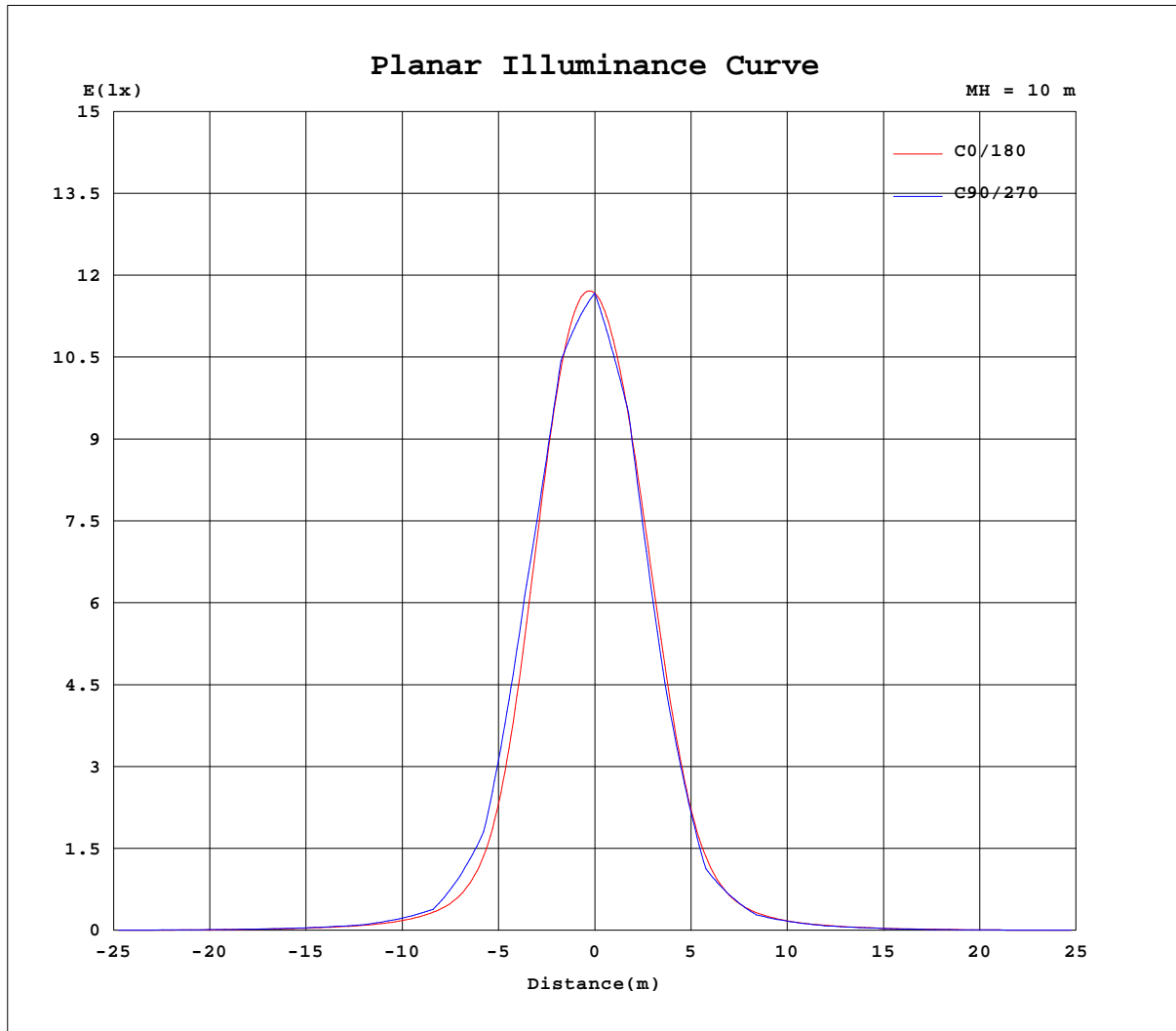
Test:U:230.3V I:0.0378A P:8.004W PF:0.9184 Lamp Flux:694.09x1 lm		
NAME: 压铸铝8w单色可调	TYPE:	WEIGHT:
SPEC.:	DIM.:	SERIAL No.:001
MFR.: EVERFINE	SUR.:0.001256	PROTECTION ANGLE:



C Range: 0 - 360DEG
 C Interval: 5.0DEG
 Test Speed: HIGH
 Temperature:25.3DEG
 Operators:DAMIN
 Test Date:2016-06-21

g Range: 0 - 90DEG
 Interval: 0.5DEG
 Test System:EVERFINE GO-2000B_V1 SYSTEM V2.0.279
 Humidity:65.0%
 Test Distance:9.130m [K=1.0000]
 Remarks:

Planar Illuminance Curve



C Range: 0 - 360DEG
 C Interval: 5.0DEG
 Test Speed: HIGH
 Temperature: 25.3DEG
 Operators: DAMIN
 Test Date: 2016-06-21

Range: 0 - 90DEG
 Interval: 0.5DEG
 Test System: EVERFINE GO-2000B_V1 SYSTEM V2.0.279
 Humidity: 65.0%
 Test Distance: 9.130m [K=1.0000]
 Remarks:

LUMINOUS DISTRIBUTION INTENSITY DATA

Test:U:230.3V I:0.0378A P:8.004W PF:0.9184 Lamp Flux:694.09x1 lm		
NAME: 压铸铝8w单色可调	TYPE:	WEIGHT:
SPEC.:	DIM.:	SERIAL No.:001
MFR.: EVERFINE	SUR.:0.001256	PROTECTION ANGLE:

Table--1

UNIT: cd

C(DEG) g (DEG)	0	5	10	15	20	25	30	35	40	45	50	55	60	65	70	75	80	85	90
0	1168	1168	1168	1168	1168	1168	1168	1168	1168	1168	1168	1168	1168	1168	1168	1168	1168	1168	1168
5	1162	1159	1156	1153	1151	1149	1147	1146	1145	1143	1142	1141	1140	1139	1137	1136	1134	1132	1130
10	1077	1070	1065	1062	1061	1062	1064	1067	1072	1077	1082	1087	1092	1095	1098	1098	1098	1096	1092
15	896	888	885	887	893	902	915	929	946	945	940	937	935	933	931	928	924	920	916
20	646	639	640	649	665	688	709	706	705	708	711	717	725	732	738	742	744	743	739
25	392	388	394	407	428	441	445	450	457	466	475	490	501	509	513	515	514	512	509
30	210	209	215	227	238	242	247	252	259	273	284	292	295	295	291	287	283	280	278
35	118	118	121	128	129	132	135	141	147	152	151	145	153	162	170	176	180	182	183
40	75.3	75.2	77.2	78.8	80.0	82.0	84.0	86.4	87.0	86.0	90.1	94.0	97.1	98.3	97.2	94.3	90.9	88.2	87.7
45	52.4	52.5	54.1	54.6	55.9	56.9	57.9	58.4	59.4	60.2	60.5	59.4	59.2	60.8	61.9	63.1	64.0	64.6	65.1
50	38.2	38.5	39.2	39.7	40.6	41.4	42.1	42.8	43.0	42.3	43.1	43.9	44.4	44.7	44.4	43.8	43.2	42.7	42.5
55	29.1	29.4	29.7	30.3	30.9	31.6	31.8	32.0	32.2	32.5	32.5	32.3	32.4	32.7	32.9	33.1	33.2	33.3	33.2
60	21.9	22.3	22.5	22.9	23.7	23.9	24.2	24.4	24.4	24.3	24.6	24.7	24.7	24.7	24.6	24.4	24.3	24.1	23.9
65	16.2	16.6	16.7	17.0	17.4	17.8	18.0	18.1	18.3	18.3	18.2	18.1	18.2	18.4	18.5	18.5	18.6	18.5	18.3
70	11.9	12.1	12.2	12.4	12.8	13.0	13.3	13.4	13.2	13.4	13.6	13.8	13.7	13.6	13.5	13.3	13.1	12.9	12.7
75	8.49	8.56	8.69	8.81	9.21	6.77	9.54	9.58	9.62	9.59	9.70	9.78	9.78	9.72	9.66	9.62	9.56	9.51	9.44
80	5.00	5.15	5.29	5.52	5.81	5.57	4.02	6.10	6.01	6.20	6.25	6.28	6.27	6.22	6.14	6.14	6.12	6.11	6.16
85	1.44	1.71	1.95	2.23	2.27	2.39	2.55	2.42	1.84	1.76	1.41	1.10	0.82	0.57	0.36	0.21	0.09	0.02	0.00
90	0.00	0.00	0.00	0.00	0.00	0.00	0.00	0.00	0.00	0.00	0.00	0.00	0.00	0.00	0.00	0.00	0.00	0.00	0.00

C Range: 0 - 360DEG
 C Interval: 5.0DEG
 Test Speed: HIGH
 Temperature:25.3DEG
 Operators:DAMIN
 Test Date:2016-06-21

g Range: 0 - 90DEG
 Interval: 0.5DEG
 Test System:EVERFINE GO-2000B_V1 SYSTEM V2.0.279
 Humidity:65.0%
 Test Distance:9.130m [K=1.0000]
 Remarks:

LUMINOUS DISTRIBUTION INTENSITY DATA

Test:U:230.3V I:0.0378A P:8.004W PF:0.9184 Lamp Flux:694.09x1 lm		
NAME: 压铸铝8W单色可调	TYPE:	WEIGHT:
SPEC.:	DIM.:	SERIAL No.:001
MFR.: EVERFINE	SUR.:0.001256	PROTECTION ANGLE:

Table--2

UNIT: cd

C(DEG) g (DEG)	95	100	105	110	115	120	125	130	135	140	145	150	155	160	165	170	175	180	185
0	1168	1168	1168	1168	1168	1168	1168	1168	1168	1168	1168	1168	1168	1168	1168	1168	1168	1168	1168
5	1127	1125	1122	1119	1116	1112	1110	1107	1104	1102	1101	1099	1099	1099	1100	1101	1103	1106	1099
10	1087	1080	1071	1062	1052	1042	1031	1020	1010	1000	992	985	980	976	975	976	979	985	971
15	909	903	896	890	884	878	873	870	869	865	845	829	814	804	797	795	798	805	785
20	731	722	713	701	688	676	665	655	646	639	634	632	614	595	583	577	578	587	565
25	504	500	495	488	481	471	459	444	431	419	410	402	397	386	371	363	363	370	352
30	278	280	281	283	283	282	277	270	258	245	237	230	224	220	213	206	204	208	198
35	182	180	175	168	160	150	142	147	146	141	135	130	127	124	122	117	116	117	112
40	89.7	93.1	96.5	98.7	98.8	96.6	92.8	88.2	83.8	83.7	82.5	80.5	78.6	76.6	75.5	74.2	73.0	73.7	71.5
45	65.4	65.4	64.7	63.5	61.8	59.6	58.7	58.9	57.8	55.9	54.0	54.1	53.3	52.4	51.6	51.4	50.5	50.9	49.6
50	42.7	43.3	43.9	44.4	44.5	43.9	42.7	41.4	40.3	40.4	39.7	38.9	38.4	37.9	37.3	37.0	36.5	36.6	35.9
55	33.1	33.0	32.8	32.4	32.0	31.4	30.9	30.9	30.6	30.1	29.6	29.1	28.5	28.0	27.9	27.5	27.3	27.4	27.0
60	23.8	23.9	23.9	23.9	23.8	23.5	23.2	22.9	22.4	22.0	21.7	21.4	20.8	20.5	20.4	20.2	20.1	20.2	20.0
65	18.2	18.1	17.9	17.7	17.4	17.0	16.6	16.5	16.5	16.0	15.6	15.6	15.3	15.2	15.1	15.2	15.0	15.1	14.9
70	12.6	12.6	12.6	12.6	12.7	12.6	12.5	12.2	12.0	11.6	11.7	11.5	11.2	11.1	11.1	11.0	11.0	11.0	10.9
75	9.38	9.29	9.19	9.12	9.04	8.97	8.86	8.77	8.71	8.60	8.45	8.36	8.23	8.09	7.98	7.88	7.89	7.94	7.76
80	6.16	6.14	6.10	6.05	5.99	5.93	5.85	5.77	5.68	5.59	5.47	5.39	5.26	5.17	4.97	4.82	4.71	4.75	4.64
85	0.02	0.09	0.21	0.36	0.56	0.79	1.05	1.32	1.62	1.91	2.17	2.34	2.21	2.10	2.06	1.88	1.61	1.37	1.50
90	0.00	0.00	0.00	0.00	0.00	0.00	0.00	0.00	0.00	0.00	0.00	0.00	0.00	0.00	0.00	0.00	0.00	0.01	0.00

C Range: 0 - 360DEG
 C Interval: 5.0DEG
 Test Speed: HIGH
 Temperature:25.3DEG
 Operators:DAMIN
 Test Date:2016-06-21

g Range: 0 - 90DEG
 Interval: 0.5DEG
 Test System:EVERFINE GO-2000B_V1 SYSTEM V2.0.279
 Humidity:65.0%
 Test Distance:9.130m [K=1.0000]
 Remarks:

LUMINOUS DISTRIBUTION INTENSITY DATA

Test:U:230.3V I:0.0378A P:8.004W PF:0.9184 Lamp Flux:694.09x1 lm		
NAME: 压铸铝8w单色可调	TYPE:	WEIGHT:
SPEC.:	DIM.:	SERIAL No.:001
MFR.: EVERFINE	SUR.:0.001256	PROTECTION ANGLE:

Table--3

UNIT: cd

C(DEG) g (DEG)	190	195	200	205	210	215	220	225	230	235	240	245	250	255	260	265	270	275	280
0	1168	1168	1168	1168	1168	1168	1168	1168	1168	1168	1168	1168	1168	1168	1168	1168	1168	1168	1168
5	1093	1087	1083	1079	1076	1074	1072	1071	1070	1070	1071	1072	1073	1074	1076	1078	1080	1082	1084
10	959	950	943	939	937	937	939	942	947	953	959	966	972	978	983	988	992	995	997
15	770	759	754	752	754	761	771	769	764	761	760	760	761	762	764	766	770	773	777
20	550	541	538	541	545	539	535	533	532	532	533	535	537	541	543	545	547	550	551
25	342	337	338	338	335	333	330	327	324	330	339	346	351	355	357	359	361	362	364
30	193	191	191	190	189	186	184	190	194	197	197	195	190	184	178	174	174	176	182
35	111	111	110	109	107	108	111	111	108	101	104	108	111	114	117	118	119	120	119
40	71.0	70.7	70.3	70.0	69.9	69.7	68.7	66.8	68.2	69.5	70.4	70.3	69.5	67.9	66.1	64.8	64.5	65.8	67.8
45	49.6	49.2	49.4	49.3	49.0	48.0	48.2	48.3	47.9	46.7	46.3	46.9	47.2	47.9	48.4	48.8	49.3	49.6	49.8
50	35.9	36.0	36.1	35.9	35.7	35.8	35.5	34.6	34.8	35.0	35.1	34.9	34.6	34.2	34.0	33.8	34.0	34.4	35.0
55	26.9	27.2	27.1	27.0	27.0	26.9	26.7	26.4	26.1	25.6	25.6	25.7	25.7	25.7	25.8	25.9	26.1	26.3	26.5
60	20.0	20.1	20.2	20.2	20.2	20.2	19.7	19.3	19.4	19.5	19.4	19.2	18.9	18.5	18.3	18.2	18.1	18.3	18.6
65	14.9	14.9	15.0	15.0	14.9	14.8	14.7	14.4	14.3	14.2	14.2	14.2	14.2	14.1	14.1	14.1	14.1	14.2	14.3
70	10.8	10.9	11.0	11.0	10.9	11.0	10.7	10.5	10.5	10.6	10.5	10.5	10.4	10.3	10.2	10.1	10.1	10.1	10.2
75	7.66	7.71	7.79	7.73	7.66	7.59	7.45	7.27	7.23	7.19	7.08	6.90	6.76	6.70	6.64	6.62	6.61	6.70	6.80
80	4.59	4.56	4.58	4.50	4.42	4.34	4.24	4.12	4.05	3.95	3.73	3.43	3.22	3.17	3.15	3.13	3.15	3.32	3.47
85	1.45	1.41	1.41	1.19	1.11	1.15	1.07	0.94	0.78	0.61	0.44	0.29	0.18	0.10	0.05	0.01	0.00	0.01	0.05
90	0.00	0.00	0.00	0.00	0.00	0.00	0.00	0.00	0.00	0.00	0.00	0.00	0.00	0.00	0.00	0.00	0.00	0.00	0.00

C Range: 0 - 360DEG
 C Interval: 5.0DEG
 Test Speed: HIGH
 Temperature:25.3DEG
 Operators:DAMIN
 Test Date:2016-06-21

g Range: 0 - 90DEG
 Interval: 0.5DEG
 Test System:EVERFINE GO-2000B_V1 SYSTEM V2.0.279
 Humidity:65.0%
 Test Distance:9.130m [K=1.0000]
 Remarks:

LUMINOUS DISTRIBUTION INTENSITY DATA

Test:U:230.3V I:0.0378A P:8.004W PF:0.9184 Lamp Flux:694.09x1 lm		
NAME: 压铸铝8w单色可调	TYPE:	WEIGHT:
SPEC.:	DIM.:	SERIAL No.:001
MFR.: EVERFINE	SUR.:0.001256	PROTECTION ANGLE:

Table--4

UNIT: cd

C(DEG) g (DEG)	285	290	295	300	305	310	315	320	325	330	335	340	345	350	355				
0	1168	1168	1168	1168	1168	1168	1168	1168	1168	1168	1168	1168	1168	1168	1168				
5	1086	1089	1092	1095	1098	1102	1106	1110	1115	1120	1126	1132	1139	1146	1154				
10	998	998	998	999	998	999	1000	1001	1004	1009	1015	1023	1033	1046	1060				
15	782	788	794	801	810	819	830	838	832	829	829	833	841	855	873				
20	554	556	559	562	566	571	576	582	590	600	596	593	596	605	622				
25	364	363	360	354	345	339	345	350	355	358	362	361	358	362	373				
30	188	196	202	205	205	201	194	185	190	194	196	197	197	197	201				
35	117	115	111	107	105	112	113	112	109	108	110	112	113	112	113				
40	70.1	72.0	73.1	73.2	72.2	70.6	68.9	70.2	70.8	70.4	70.4	71.2	72.2	72.8	73.1				
45	49.6	49.2	48.8	48.1	48.3	49.5	49.8	49.5	48.8	49.5	49.7	49.8	50.3	51.2	51.2				
50	35.5	36.1	36.5	36.7	36.4	36.2	36.0	36.7	36.7	36.7	36.8	36.8	37.0	37.5	37.6				
55	26.6	26.7	26.9	27.0	27.0	27.4	27.6	27.7	27.6	27.8	28.0	28.0	28.1	28.4	28.7				
60	19.0	19.4	19.8	20.2	20.3	20.4	20.3	20.4	20.6	20.6	20.7	20.9	20.9	21.2	21.6				
65	14.3	14.4	14.5	14.5	14.5	14.8	15.0	15.0	15.1	15.2	15.3	15.4	15.6	15.8	16.1				
70	10.3	10.4	10.6	10.8	10.8	10.8	10.8	11.0	11.2	11.2	11.3	11.3	11.5	11.6	11.8				
75	6.90	7.04	7.16	7.27	7.32	7.41	7.53	7.66	7.73	7.79	7.87	7.99	8.04	8.18	8.27				
80	3.64	3.84	3.96	4.04	4.10	4.17	4.25	4.34	4.43	4.55	4.61	4.63	4.72	4.79	4.91				
85	0.12	0.22	0.35	0.49	0.64	0.81	0.96	1.09	1.15	1.05	1.15	1.36	1.38	1.38	1.44				
90	0.00	0.00	0.00	0.00	0.00	0.00	0.00	0.00	0.00	0.00	0.00	0.00	0.00	0.00	0.00				

C Range: 0 - 360DEG
 C Interval: 5.0DEG
 Test Speed: HIGH
 Temperature:25.3DEG
 Operators:DAMIN
 Test Date:2016-06-21

g Range: 0 - 90DEG
 Interval: 0.5DEG
 Test System:EVERFINE GO-2000B_V1 SYSTEM V2.0.279
 Humidity:65.0%
 Test Distance:9.130m [K=1.0000]
 Remarks: