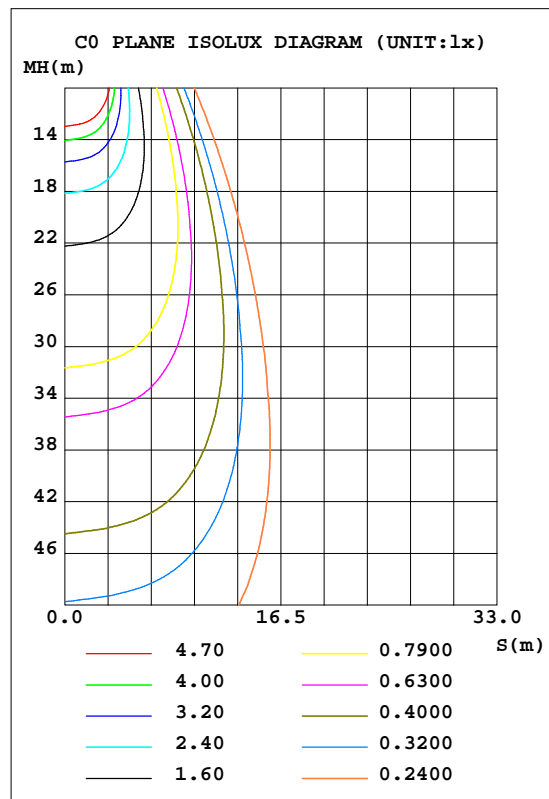
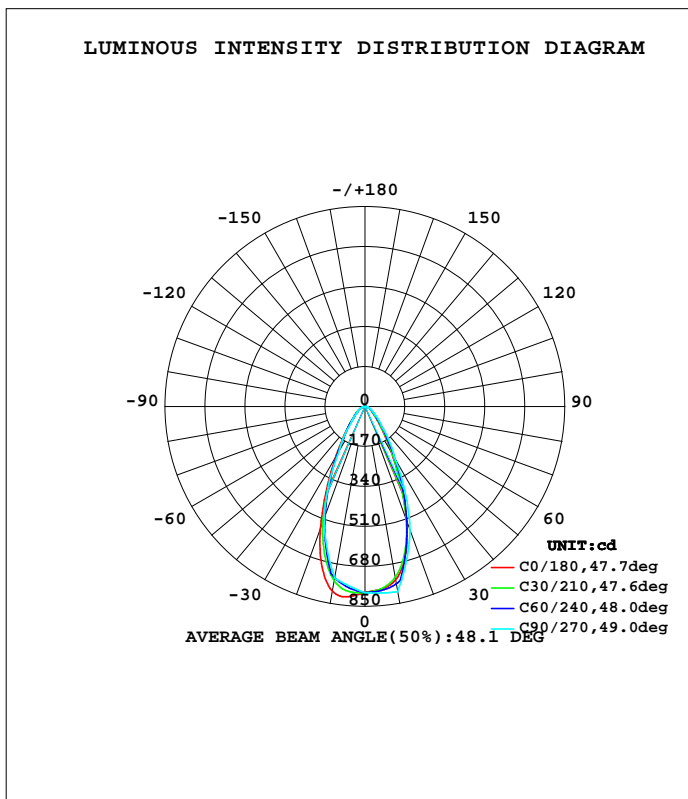


LUMINAIRE PHOTOMETRIC TEST REPORT

Test:U:230.4V I:0.0380A P:8.066W PF:0.9218 Lamp Flux:662.062x1 lm		
NAME: 5RS045-3000K	TYPE:	WEIGHT:
SPEC.:	DIM.:	SERIAL No.:001
MFR.: Su Zhou Radiant Lighting Technology Co.,	LDSUR.:	PROTECTION ANGLE:

DATA OF LAMP		PHOTOMETRIC DATA				Eff: 82.08 lm/W
MODEL	5RS045-3000K	I _{max} (cd)	814.2	S/MH(C0/180)	0.74	
NOMINAL POWER(W)	8	LOR(%)	100.0	S/MH(C90/270)	0.78	
RATED VOLTAGE(V)	230	TOTAL FLUX(lm)	662.06	h UP, DN(C0-180)	0.0, 51.9	
NOMINAL FLUX(lm)	662.062	CIE CLASS	DIRECT	h UP, DN(C180-360)	0.0, 48.1	
LAMPS INSIDE	1	h up(%)	0.0	CIBSE SHR NOM	0.75	
TEST VOLTAGE(V)	230.4	h down(%)	100.0	CIBSE SHR MAX	0.75	



C Range: 0 - 360DEG
 C Interval: 5.0DEG
 Test Speed: HIGH
 Temperature:25.3DEG
 Operators:01
 Test Date:2017-02-13

deg Range: 0 - 90DEG
 Interval: 0.5DEG
 Test System:EVERFINE GO-2000B_V1 SYSTEM V2.0.279
 Humidity:65.0%
 Test Distance:8.989m [K=1.0000]
 Remarks:

ZONAL FLUX DIAGRAM

ZONAL FLUX DIAGRAM:

g	C0	C45	C90	C135	C180	C225	C270	C315	g	F zone	F total	%lum,lamp
5	779.5	781.2	795.8	806.4	811.2	780.9	766.5	766.2	0- 5	18.84	18.84	2.85,2.85
10	749.4	748.0	800.0	799.7	798.2	743.2	741.5	729.3	5- 10	55.41	74.25	11.2,11.2
15	661.3	666.0	681.2	734.4	706.5	654.4	624.9	650.7	10- 15	84.88	159.1	24,24
20	517.7	512.3	562.4	572.7	557.2	505.1	508.3	499.8	15- 20	97.98	257.1	38.8,38.8
25	354.6	362.0	407.9	406.6	385.1	355.8	365.0	348.2	20- 25	93.65	350.8	53,53
30	227.4	243.6	253.3	273.0	251.6	238.2	221.7	227.7	25- 30	76.79	427.5	64.6,64.6
35	144.1	159.8	182.3	179.6	163.9	157.3	157.9	144.7	30- 35	57.77	485.3	73.3,73.3
40	94.37	103.5	111.3	117.2	109.7	102.5	94.01	91.36	35- 40	43.27	528.6	79.8,79.8
45	65.13	73.26	83.85	83.10	75.81	73.03	71.19	65.49	40- 45	32.25	560.8	84.7,84.7
50	47.58	51.68	56.41	57.83	54.58	51.25	48.36	46.88	45- 50	25.11	585.9	88.5,88.5
55	36.47	39.73	44.59	44.11	40.78	39.33	38.40	36.68	50- 55	19.86	605.8	91.5,91.5
60	28.42	30.34	32.76	33.00	30.92	29.59	28.44	28.20	55- 60	16.14	621.9	93.9,93.9
65	22.06	23.79	25.98	25.29	23.48	22.70	22.31	21.99	60- 65	12.99	634.9	95.9,95.9
70	16.56	18.04	19.19	18.77	17.46	16.71	16.18	16.33	65- 70	10.32	645.3	97.5,97.5
75	11.39	12.73	13.98	13.06	11.86	11.36	11.35	11.02	70- 75	7.705	653.0	98.6,98.6
80	7.119	8.291	8.759	8.282	7.242	6.833	6.518	6.641	75- 80	5.239	658.2	99.4,99.4
85	1.494	4.149	4.469	3.983	1.503	3.035	3.281	2.960	80- 85	2.943	661.1	99.9,99.9
90	0.0062	0.1852	0.1790	0.1358	0.0138	0.0494	0.0432	0.0432	85- 90	0.9198	662.1	100,100
95									90- 95			
100									95-100			
105									100-105			
110									105-110			
115									110-115			
120									115-120			
125									120-125			
130									125-130			
135									130-135			
140									135-140			
145									140-145			
150									145-150			
155									150-155			
160									155-160			
165									160-165			
170									165-170			
175									170-175			
180									175-180			
DEG	LUMINOUS INTENSITY:cd									UNIT:lm		

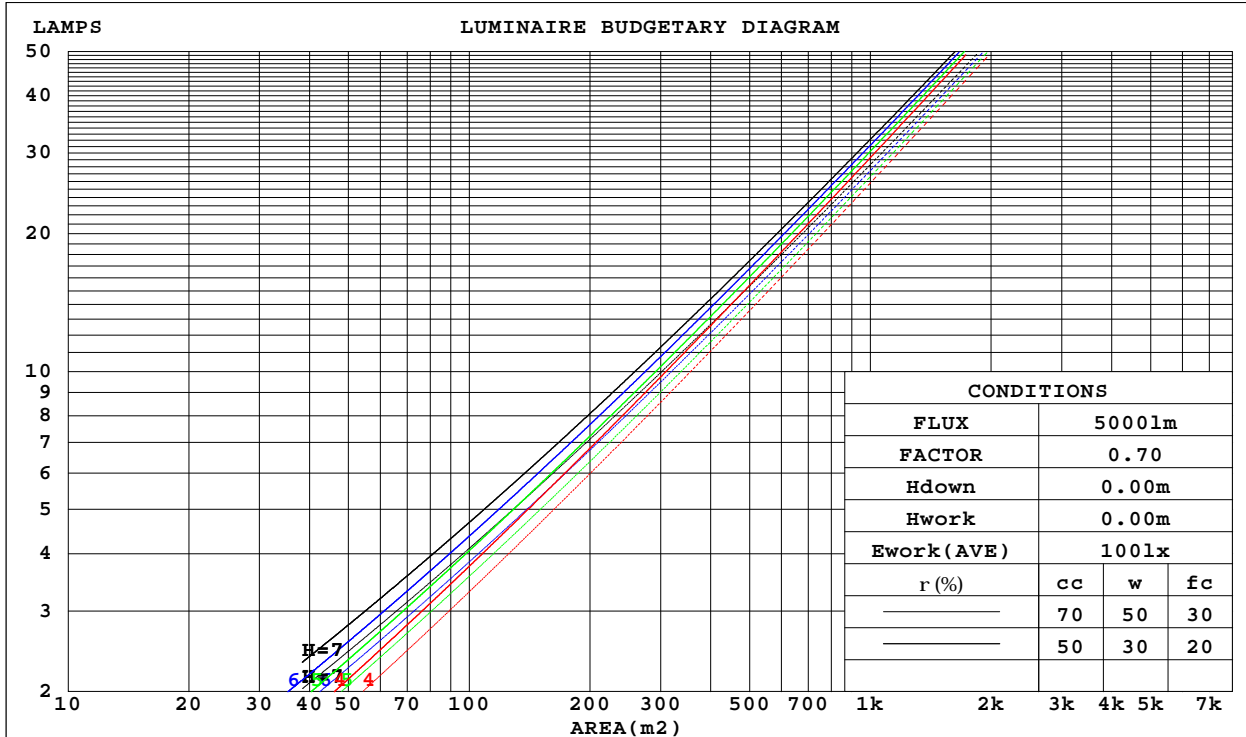
C Range: 0 - 360DEG
 C Interval: 5.0DEG
 Test Speed: HIGH
 Temperature:25.3DEG
 Operators:01
 Test Date:2017-02-13

g Range: 0 - 90DEG
 Interval: 0.5DEG
 Test System:EVERFINE GO-2000B_V1 SYSTEM V2.0.279
 Humidity:65.0%
 Test Distance:8.989m [K=1.0000]
 Remarks:

CU AND LUMINAIRE BUDGETARY ESTIMATE DIAGRAM

Test:U:230.4V I:0.0380A P:8.066W PF:0.9218 Lamp Flux:662.062x1 lm		
NAME: 5RS045-3000K	TYPE:	WEIGHT:
SPEC.:	DIM.:	SERIAL No.:001
MFR.: Su Zhou Radiant Lighting Technology Co.,	LDSUR.:	PROTECTION ANGLE:

r _{cc}	80%			70%			50%			30%			10%			0
r _w	50%	30%	10%	50%	30%	10%	50%	30%	10%	50%	30%	10%	50%	30%	10%	0
r _{fc}	20%			20%			20%			20%			20%			0
RCR	RCR:Room Cavity Ratio						Coefficients of Utilization(CU)									
0.0	1.19	1.19	1.19	1.16	1.16	1.16	1.11	1.11	1.11	1.06	1.06	1.06	1.02	1.02	1.02	1.00
1.0	1.09	1.06	1.04	1.07	1.04	1.02	1.03	1.01	.99	.99	.97	.96	.96	.94	.93	.91
2.0	1.00	.96	.92	.99	.94	.91	.95	.92	.89	.92	.89	.87	.89	.87	.85	.83
3.0	.93	.87	.82	.91	.86	.82	.88	.84	.80	.86	.82	.79	.84	.81	.78	.76
4.0	.86	.80	.75	.85	.79	.75	.82	.78	.74	.80	.76	.73	.79	.75	.72	.70
5.0	.80	.74	.69	.79	.73	.69	.77	.72	.68	.75	.71	.67	.74	.70	.67	.65
6.0	.75	.68	.64	.74	.68	.63	.72	.67	.63	.71	.66	.63	.70	.65	.62	.61
7.0	.70	.64	.59	.70	.63	.59	.68	.63	.59	.67	.62	.58	.66	.61	.58	.57
8.0	.66	.60	.55	.66	.59	.55	.64	.59	.55	.63	.58	.55	.62	.58	.55	.53
9.0	.62	.56	.52	.62	.56	.52	.61	.56	.52	.60	.55	.52	.59	.55	.51	.50
10.0	.59	.53	.49	.59	.53	.49	.58	.52	.49	.57	.52	.49	.56	.52	.48	.47



C Range: 0 - 360DEG
C Interval: 5.0DEG
Test Speed: HIGH
Temperature:25.3DEG
Operators:01
Test Date:2017-02-13

g Range: 0 - 90DEG
g Interval: 0.5DEG
Test System:EVERFINE GO-2000B_V1 SYSTEM V2.0.279
Humidity:65.0%
Test Distance:8.989m [K=1.0000]
Remarks:

WEC AND CCEC

Test:U:230.4V I:0.0380A P:8.066W PF:0.9218 Lamp Flux:662.062x1 lm		
NAME: 5RS045-3000K	TYPE:	WEIGHT:
SPEC.:	DIM.:	SERIAL No.:001
MFR.: Su Zhou Radiant Lighting Technology Co.,	LDSUR.:	PROTECTION ANGLE:

rcc	80%			70%			50%			30%			10%			0
rw	50%	30%	10%	50%	30%	10%	50%	30%	10%	50%	30%	10%	50%	30%	10%	0
rfc	20%			20%			20%			20%			20%			0
RCR	RCR:Room Cavity Ratio						Wall Exitance Coefficients(WEC)									
0.0																
1.0	.208	.118	.037	.201	.115	.036	.188	.108	.035	.177	.102	.033	.166	.096	.031	
2.0	.197	.108	.033	.191	.105	.032	.180	.100	.031	.170	.096	.030	.161	.091	.029	
3.0	.185	.099	.030	.180	.096	.029	.171	.093	.028	.162	.089	.027	.154	.085	.026	
4.0	.174	.090	.027	.170	.089	.026	.162	.086	.026	.154	.083	.025	.147	.080	.024	
5.0	.164	.083	.024	.160	.082	.024	.153	.080	.023	.146	.077	.023	.140	.075	.023	
6.0	.154	.077	.022	.151	.076	.022	.145	.074	.022	.139	.072	.021	.134	.070	.021	
7.0	.146	.072	.020	.143	.071	.020	.138	.070	.020	.133	.068	.020	.128	.066	.019	
8.0	.139	.068	.019	.136	.067	.019	.131	.065	.019	.126	.064	.018	.122	.063	.018	
9.0	.132	.064	.018	.129	.063	.018	.125	.062	.018	.121	.061	.017	.117	.059	.017	
10.0	.126	.060	.017	.123	.060	.017	.119	.059	.016	.116	.057	.016	.112	.056	.016	

rcc	80%			70%			50%			30%			10%			0
rw	50%	30%	10%	50%	30%	10%	50%	30%	10%	50%	30%	10%	50%	30%	10%	0
rfc	20%			20%			20%			20%			20%			0
RCR	RCR:Room Cavity Ratio						Ceiling Cavity Exitance Coefficients(CCEC)									
0.0	.190	.190	.190	.163	.163	.163	.111	.111	.111	.064	.064	.064	.020	.020	.020	
1.0	.173	.157	.142	.148	.135	.123	.101	.093	.085	.058	.054	.049	.019	.017	.016	
2.0	.160	.132	.109	.137	.114	.095	.094	.079	.066	.054	.046	.039	.017	.015	.013	
3.0	.148	.114	.086	.127	.098	.075	.087	.068	.052	.050	.040	.031	.016	.013	.010	
4.0	.138	.099	.070	.119	.086	.060	.082	.060	.043	.047	.035	.025	.015	.011	.008	
5.0	.130	.088	.057	.111	.076	.050	.077	.053	.035	.044	.031	.021	.014	.010	.007	
6.0	.122	.079	.048	.105	.068	.041	.072	.048	.029	.042	.028	.017	.014	.009	.006	
7.0	.116	.071	.040	.099	.062	.035	.069	.043	.025	.040	.026	.015	.013	.008	.005	
8.0	.110	.065	.035	.094	.057	.030	.065	.040	.021	.038	.023	.013	.012	.008	.004	
9.0	.104	.060	.030	.090	.052	.026	.062	.037	.019	.036	.022	.011	.012	.007	.004	
10.0	.099	.056	.027	.086	.048	.023	.059	.034	.016	.035	.020	.010	.011	.007	.003	

C Range: 0 - 360DEG
 C Interval: 5.0DEG
 Test Speed: HIGH
 Temperature:25.3DEG
 Operators:01
 Test Date:2017-02-13

g Range: 0 - 90DEG
 Interval: 0.5DEG
 Test System:EVERFINE GO-2000B_V1 SYSTEM V2.0.279
 Humidity:65.0%
 Test Distance:8.989m [K=1.0000]
 Remarks:

Uncorrected UGR Table

Test:U:230.4V I:0.0380A P:8.066W PF:0.9218 Lamp Flux:662.062x1 lm										
NAME: 5RS045-3000K					TYPE:			WEIGHT:		
SPEC.:					DIM.:			SERIAL No.:001		
MFR.: Su Zhou Radiant Lighting Technology Co.,					LDTSUR.:			PROTECTION ANGLE:		
ceiling/cavity	0.7	0.7	0.5	0.5	0.3	0.7	0.7	0.5	0.5	0.3
walls	0.5	0.3	0.5	0.3	0.3	0.5	0.3	0.5	0.3	0.3
working plane	0.2	0.2	0.2	0.2	0.2	0.2	0.2	0.2	0.2	0.2
Room dimensions	Viewed crosswise					Viewed endwise				
x = 2H y = 2H	23.7	24.8	24.0	25.0	25.1	24.6	25.7	24.9	25.9	26.0
3H	24.6	25.6	24.8	25.8	26.0	25.5	26.5	25.8	26.7	26.9
4H	25.0	25.9	25.2	26.1	26.3	25.9	26.8	26.2	27.1	27.3
6H	25.2	26.1	25.5	26.4	26.6	26.2	27.1	26.5	27.4	27.6
8H	25.3	26.2	25.7	26.4	26.7	26.4	27.2	26.7	27.5	27.7
12H	25.4	26.2	25.7	26.5	26.7	26.5	27.3	26.8	27.5	27.8
4H 2H	24.1	25.0	24.4	25.3	25.5	24.9	25.8	25.1	26.0	26.2
3H	25.2	26.0	25.5	26.3	26.5	25.9	26.7	26.3	27.0	27.3
4H	25.7	26.4	26.0	26.7	27.0	26.5	27.2	26.8	27.5	27.8
6H	26.1	26.7	26.5	27.1	27.4	27.0	27.6	27.4	28.0	28.3
8H	26.2	26.8	26.6	27.2	27.6	27.2	27.8	27.6	28.1	28.5
12H	26.3	26.9	26.7	27.3	27.6	27.3	27.9	27.7	28.2	28.6
8H 4H	25.9	26.5	26.3	26.9	27.2	26.6	27.2	27.0	27.6	28.0
6H	26.5	27.0	26.9	27.4	27.8	27.3	27.8	27.7	28.2	28.6
8H	26.7	27.1	27.1	27.6	28.0	27.5	28.0	28.0	28.4	28.8
12H	26.9	27.2	27.3	27.7	28.1	27.8	28.2	28.3	28.6	29.1
12H 4H	25.9	26.5	26.3	26.8	27.2	26.6	27.2	27.1	27.6	28.0
6H	26.5	27.0	27.0	27.4	27.8	27.3	27.7	27.7	28.2	28.6
8H	26.8	27.2	27.3	27.6	28.1	27.6	28.0	28.1	28.4	28.9
Variations with the observer position at spacings:										
S = 1.0H	+ 0.5 / - 0.6					+ 0.5 / - 0.6				
1.5H	+ 0.6 / - 0.5					+ 0.9 / - 0.4				
2.0H	+ 0.6 / - 0.5					+ 0.9 / - 0.5				

CIE Pub.117 Corrected 662.1 lm Total Lamp Luminous Flux.(8log(F/F0) = -1.4)

C Range: 0 - 360DEG
 C Interval: 5.0DEG
 Test Speed: HIGH
 Temperature:25.3DEG
 Operators:01
 Test Date:2017-02-13

g Range: 0 - 90DEG
 g Interval: 0.5DEG
 Test System:EVERFINE GO-2000B_V1 SYSTEM V2.0.279
 Humidity:65.0%
 Test Distance:8.989m [K=1.0000]
 Remarks:

UTILIZATION FACTORS TABLE

Test:U:230.4V I:0.0380A P:8.066W PF:0.9218 Lamp Flux:662.062x1 lm		
NAME: 5RS045-3000K	TYPE:	WEIGHT:
SPEC.:	DIM.:	SERIAL No.:001
MFR.: Su Zhou Radiant Lighting Technology Co.,	LDSUR.:	PROTECTION ANGLE:

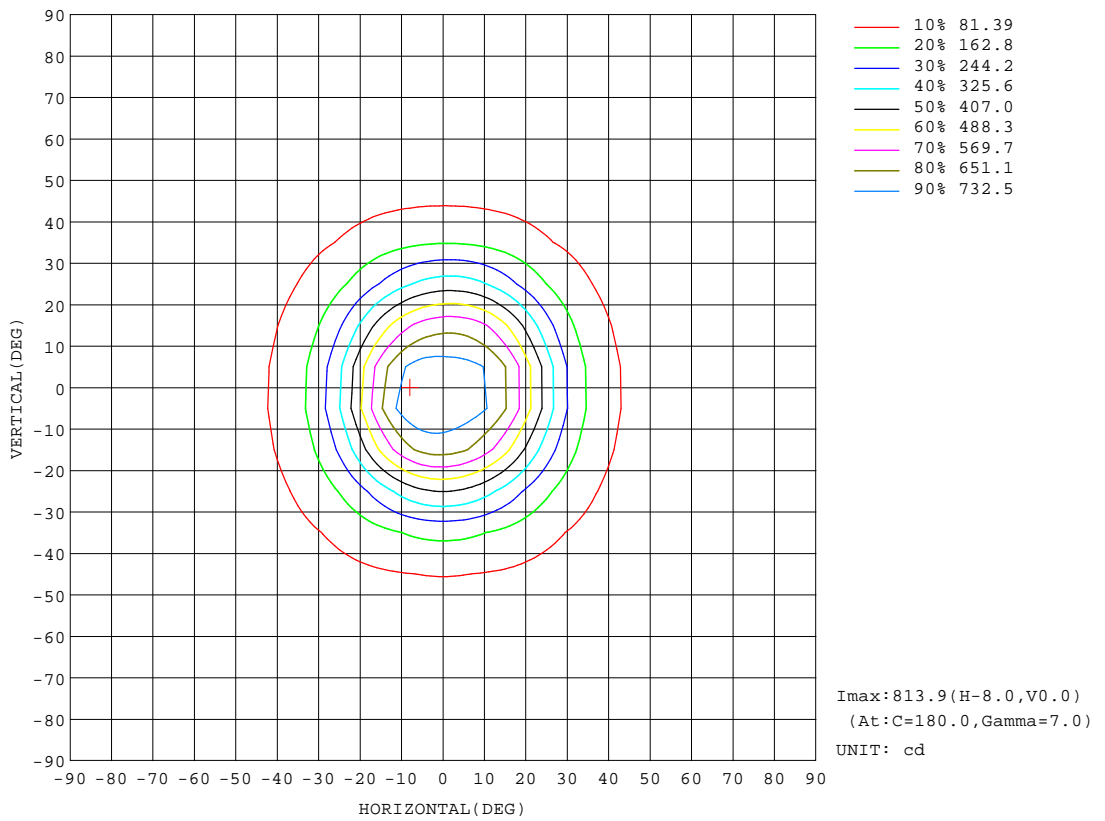
REFLECTANCE										
Ceiling	0.8	0.8	0.8	0.7	0.7	0.7	0.5	0.5	0.5	0
Walls	0.7	0.5	0.3	0.7	0.5	0.3	0.7	0.5	0.3	0
Working plane	0.2	0.2	0.2	0.2	0.2	0.2	0.2	0.2	0.2	0
ROOM INDEX	UTILIZATION FACTORS(PERCENT) k(RI) x RCR = 5									
k = 0.60	79	71	67	78	71	66	78	71	66	62
0.80	87	80	75	87	79	75	85	79	75	70
1.00	93	86	81	92	85	81	90	86	80	76
1.25	98	91	87	97	91	86	94	89	86	80
1.50	101	95	91	100	94	90	97	93	89	84
2.00	105	100	96	103	99	95	100	96	93	87
2.50	107	102	99	105	101	98	102	99	96	89
3.00	109	105	101	107	103	100	104	101	98	91
4.00	112	108	105	110	107	104	106	103	101	94
5.00	113	110	108	111	108	106	107	105	103	95
ROOM INDEX	UF(total)									Direct
According to DIN EN 13032-2 2004			Suspended				SHRNOM = 1.25			

C Range: 0 - 360DEG
 C Interval: 5.0DEG
 Test Speed: HIGH
 Temperature:25.3DEG
 Operators:01
 Test Date:2017-02-13

g Range: 0 - 90DEG
 Interval: 0.5DEG
 Test System:EVERFINE GO-2000B_V1 SYSTEM V2.0.279
 Humidity:65.0%
 Test Distance:8.989m [K=1.0000]
 Remarks:

ISOCANDELA DIAGRAM

Test:U:230.4V I:0.0380A P:8.066W PF:0.9218 Lamp Flux:662.062x1 lm		
NAME: 5RS045-3000K	TYPE:	WEIGHT:
SPEC.:	DIM.:	SERIAL No.:001
MFR.: Su Zhou Radiant Lighting Technology Co.,	LDSUR.:	PROTECTION ANGLE:



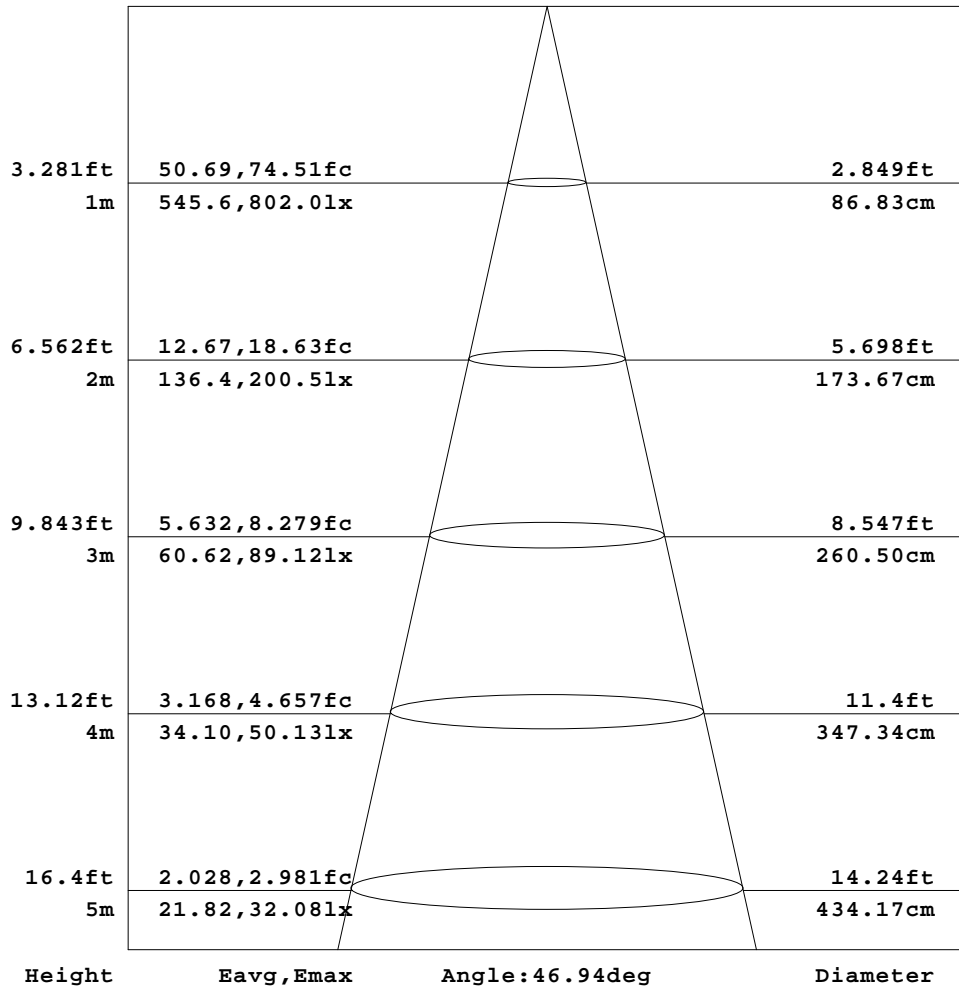
C Range: 0 - 360DEG
 C Interval: 5.0DEG
 Test Speed: HIGH
 Temperature:25.3DEG
 Operators:01
 Test Date:2017-02-13

Range: 0 - 90DEG
 Interval: 0.5DEG
 Test System:EVERFINE GO-2000B_V1 SYSTEM V2.0.279
 Humidity:65.0%
 Test Distance:8.989m [K=1.0000]
 Remarks:

AAI Figure

Test:U:230.4V I:0.0380A P:8.066W PF:0.9218 Lamp Flux:662.062x1 lm		
NAME: 5RS045-3000K	TYPE:	WEIGHT:
SPEC.:	DIM.:	SERIAL No.:001
MFR.: Su Zhou Radiant Lighting Technology Co.,	LDTSUR.:	PROTECTION ANGLE:

Flux out:324.1 lm



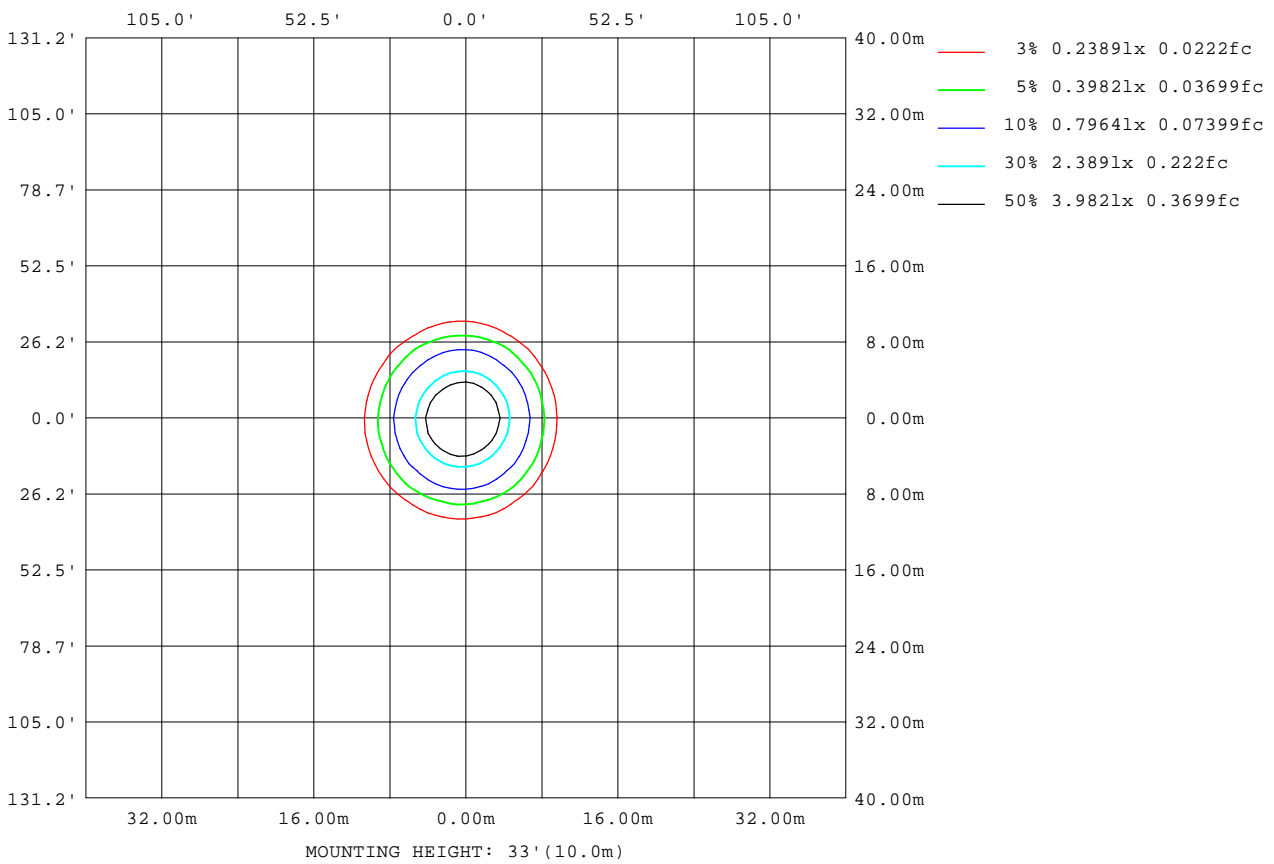
Note:The Curves indicate the illuminated area and the average illumination when the luminaire is at different distance.

C Range: 0 - 360DEG
 C Interval: 5.0DEG
 Test Speed: HIGH
 Temperature:25.3DEG
 Operators:01
 Test Date:2017-02-13

g Range: 0 - 90DEG
 Interval: 0.5DEG
 Test System:EVERFINE GO-2000B_V1 SYSTEM V2.0.279
 Humidity:65.0%
 Test Distance:8.989m [K=1.0000]
 Remarks:

ISOLUX DIAGRAM

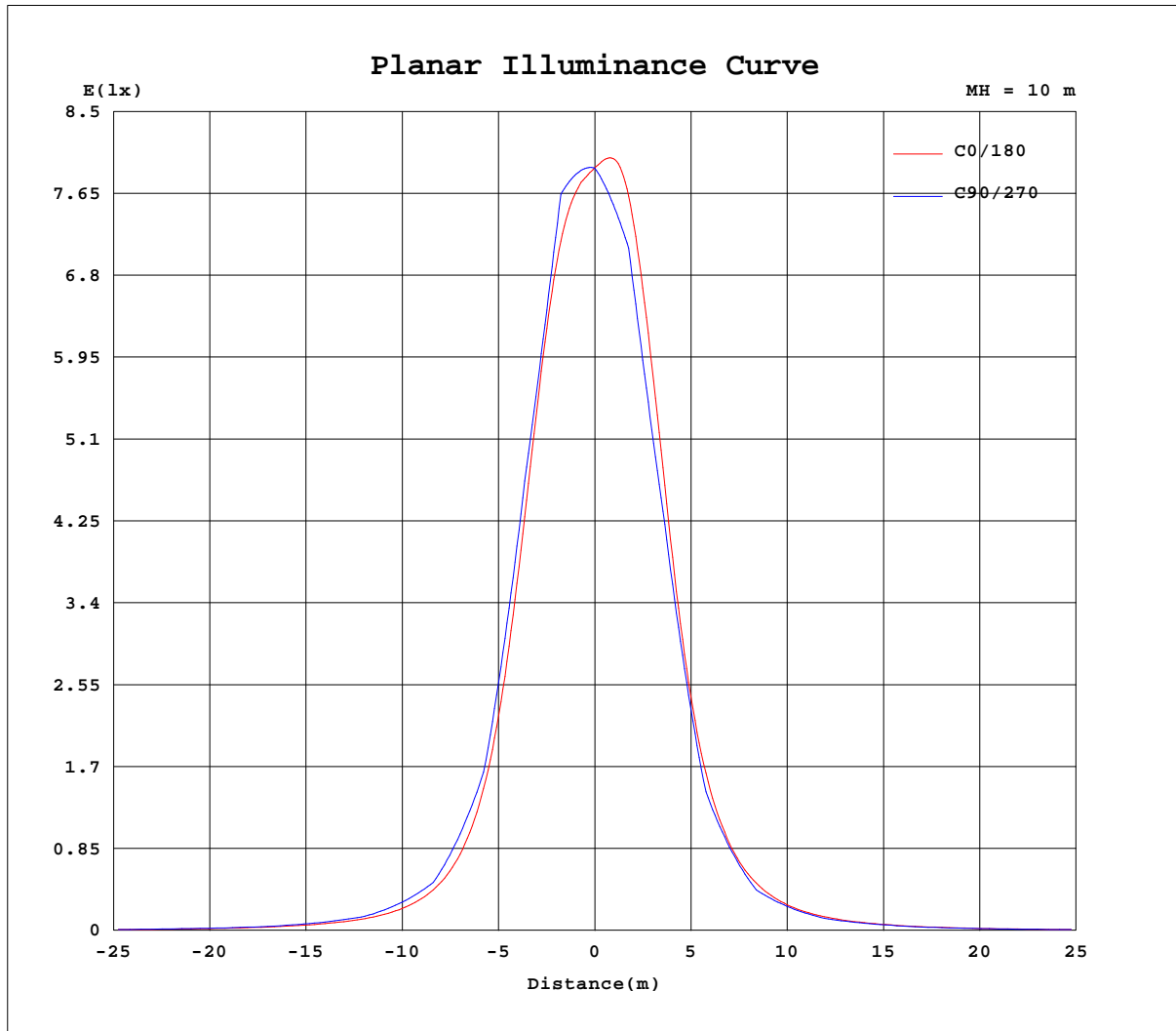
Test:U:230.4V I:0.0380A P:8.066W PF:0.9218 Lamp Flux:662.062x1 lm		
NAME: 5RS045-3000K	TYPE:	WEIGHT:
SPEC.:	DIM.:	SERIAL No.:001
MFR.: Su Zhou Radiant Lighting Technology Co.,	LDSUR.:	PROTECTION ANGLE:



C Range: 0 - 360DEG
 C Interval: 5.0DEG
 Test Speed: HIGH
 Temperature:25.3DEG
 Operators:01
 Test Date:2017-02-13

g Range: 0 - 90DEG
 Interval: 0.5DEG
 Test System:EVERFINE GO-2000B_V1 SYSTEM V2.0.279
 Humidity:65.0%
 Test Distance:8.989m [K=1.0000]
 Remarks:

Planar Illuminance Curve



C Range: 0 - 360DEG
 C Interval: 5.0DEG
 Test Speed: HIGH
 Temperature: 25.3DEG
 Operators: 01
 Test Date: 2017-02-13

deg Range: 0 - 90DEG
 Interval: 0.5DEG
 Test System: EVERFINE GO-2000B_V1 SYSTEM V2.0.279
 Humidity: 65.0%
 Test Distance: 8.989m [K=1.0000]
 Remarks:

LUMINOUS DISTRIBUTION INTENSITY DATA

Test:U:230.4V I:0.0380A P:8.066W PF:0.9218 Lamp Flux:662.062x1 lm		
NAME: 5RS045-3000K	TYPE:	WEIGHT:
SPEC.:	DIM.:	SERIAL No.:001
MFR.: Su Zhou Radiant Lighting Technology Co.,	LDSUR.:	PROTECTION ANGLE:

Table--1

UNIT: cd

C(DEG) g (DEG)	0	5	10	15	20	25	30	35	40	45	50	55	60	65	70	75	80	85	90
0	792	792	792	792	792	792	792	792	792	792	792	792	792	792	792	792	792	792	792
5	780	779	778	778	778	778	779	780	780	781	782	784	785	787	789	791	792	794	796
10	749	745	741	739	737	737	738	740	744	748	753	759	765	772	779	785	791	796	800
15	661	652	646	642	642	645	650	657	667	666	663	661	661	662	665	668	672	677	681
20	518	506	500	499	502	508	515	512	511	512	514	517	521	527	534	542	550	556	562
25	355	347	344	347	354	357	356	357	360	362	366	374	380	385	391	396	400	404	408
30	227	223	222	226	231	231	233	236	238	244	249	252	255	256	255	253	252	252	253
35	144	141	142	145	146	148	151	154	158	160	160	158	163	168	172	175	178	180	182
40	94.4	93.0	94.1	95.2	96.2	98.4	100	102	103	104	107	110	113	114	114	113	112	111	111
45	65.1	64.4	65.4	65.6	66.8	67.9	68.7	69.0	71.2	73.3	74.4	74.0	74.8	77.3	79.4	80.9	82.0	83.0	83.8
50	47.6	47.2	47.6	48.0	48.7	49.1	49.6	50.7	51.6	51.7	53.4	54.9	56.1	56.8	56.9	56.6	56.2	56.1	56.4
55	36.5	36.2	36.4	37.0	37.1	37.4	37.9	38.3	39.0	39.7	40.3	40.4	40.9	41.8	42.6	43.2	43.7	44.1	44.6
60	28.4	28.3	28.4	28.7	28.9	29.1	29.4	29.8	30.1	30.3	31.0	31.6	32.0	32.3	32.5	32.5	32.5	32.5	32.8
65	22.1	22.0	22.2	22.3	22.5	22.7	22.9	23.1	23.5	23.8	24.0	24.1	24.5	24.8	25.2	25.4	25.6	25.8	26.0
70	16.6	16.5	16.7	16.9	17.1	17.2	17.4	17.6	17.9	18.0	18.2	18.5	18.7	18.9	19.0	19.1	19.1	19.1	19.2
75	11.4	11.5	11.5	11.7	11.8	12.2	12.2	12.6	12.7	12.7	12.9	13.3	13.5	13.7	13.8	13.8	13.9	14.0	14.0
80	7.12	7.20	7.34	7.46	7.61	7.77	7.88	7.98	8.12	8.29	8.44	8.61	8.68	8.77	8.78	8.76	8.75	8.79	8.76
85	1.49	3.00	3.20	3.36	3.45	3.59	3.73	3.90	4.04	4.15	4.24	4.30	4.35	4.41	4.44	4.44	4.45	4.48	4.47
90	0.01	0.26	0.30	0.28	0.29	0.27	0.23	0.22	0.20	0.19	0.19	0.19	0.19	0.19	0.19	0.18	0.18	0.18	0.18

C Range: 0 - 360DEG
 C Interval: 5.0DEG
 Test Speed: HIGH
 Temperature:25.3DEG
 Operators:01
 Test Date:2017-02-13

g Range: 0 - 90DEG
 Interval: 0.5DEG
 Test System:EVERFINE GO-2000B_V1 SYSTEM V2.0.279
 Humidity:65.0%
 Test Distance:8.989m [K=1.0000]
 Remarks:

LUMINOUS DISTRIBUTION INTENSITY DATA

Test:U:230.4V I:0.0380A P:8.066W PF:0.9218 Lamp Flux:662.062x1 lm		
NAME: 5RS045-3000K	TYPE:	WEIGHT:
SPEC.:	DIM.:	SERIAL No.:001
MFR.: Su Zhou Radiant Lighting Technology Co.,	LDSUR.:	PROTECTION ANGLE:

Table--3

UNIT: cd

C(DEG) g (DEG)	190	195	200	205	210	215	220	225	230	235	240	245	250	255	260	265	270	275	280
0	792	792	792	792	792	792	792	792	792	792	792	792	792	792	792	792	792	792	792
5	804	800	796	793	790	787	784	781	779	776	774	772	771	770	768	767	767	766	765
10	779	771	764	758	752	748	745	743	741	740	740	740	740	740	741	741	741	741	740
15	680	671	665	660	659	659	661	654	647	640	635	632	628	626	625	625	625	625	627
20	531	525	523	525	526	518	511	505	501	499	498	498	500	502	504	507	508	509	508
25	366	364	368	369	365	362	359	356	354	357	360	362	364	364	364	364	365	366	366
30	240	241	242	239	238	237	235	238	241	242	241	238	235	230	226	223	222	222	224
35	158	160	157	156	155	155	157	157	155	151	153	155	157	158	158	158	158	157	156
40	107	106	105	104	104	105	104	103	104	106	106	105	103	100.0	97.4	95.3	94.0	93.9	94.9
45	74.6	73.3	73.0	72.8	72.5	71.4	72.4	73.0	72.4	70.3	69.8	70.9	71.5	71.6	71.7	71.6	71.2	70.6	69.9
50	53.6	53.0	52.8	52.6	52.3	52.5	52.4	51.3	52.0	52.4	52.6	52.4	51.6	50.5	49.5	48.7	48.4	48.4	48.5
55	40.0	39.9	39.6	39.5	39.4	39.0	39.2	39.3	39.2	38.5	38.5	38.7	38.8	38.7	38.6	38.5	38.4	38.3	38.0
60	30.4	30.2	30.2	30.0	29.8	29.9	29.8	29.6	29.8	29.9	29.9	29.7	29.5	29.1	28.8	28.6	28.4	28.4	28.5
65	23.1	23.1	22.9	23.2	23.1	22.6	22.7	22.7	22.5	22.3	22.4	22.4	22.5	22.4	22.4	22.4	22.3	22.3	22.2
70	17.1	17.1	17.0	16.9	17.9	16.8	16.7	16.7	16.6	16.6	16.7	16.6	16.5	16.4	16.4	16.3	16.2	16.2	16.1
75	11.7	11.6	11.6	11.6	11.5	11.6	11.5	11.4	11.2	11.3	11.5	11.5	11.5	11.4	11.4	11.4	11.3	11.3	11.3
80	7.16	7.09	7.02	7.02	6.97	6.88	6.84	6.83	6.79	6.79	6.79	6.75	6.68	6.60	6.54	6.55	6.52	6.48	6.47
85	2.86	2.85	2.79	2.70	2.64	2.81	2.93	3.04	3.11	3.18	3.22	3.26	3.28	3.27	3.27	3.29	3.28	3.26	3.23
90	0.06	0.06	0.07	0.06	0.06	0.06	0.05	0.05	0.05	0.05	0.07	0.06	0.06	0.06	0.06	0.04	0.04	0.04	0.04

C Range: 0 - 360DEG
 C Interval: 5.0DEG
 Test Speed: HIGH
 Temperature:25.3DEG
 Operators:01
 Test Date:2017-02-13

g Range: 0 - 90DEG
 Interval: 0.5DEG
 Test System:EVERFINE GO-2000B_V1 SYSTEM V2.0.279
 Humidity:65.0%
 Test Distance:8.989m [K=1.0000]
 Remarks:

LUMINOUS DISTRIBUTION INTENSITY DATA

Test:U:230.4V I:0.0380A P:8.066W PF:0.9218 Lamp Flux:662.062x1 lm		
NAME: 5RS045-3000K	TYPE:	WEIGHT:
SPEC.:	DIM.:	SERIAL No.:001
MFR.: Su Zhou Radiant Lighting Technology Co.,	LDTSUR.:	PROTECTION ANGLE:

Table--4

UNIT: cd

C(DEG) g (DEG)	285	290	295	300	305	310	315	320	325	330	335	340	345	350	355				
0	792	792	792	792	792	792	792	792	792	792	792	792	792	792	792				
5	765	765	765	765	765	766	766	767	768	769	770	772	773	775	777				
10	740	738	737	735	733	731	729	728	727	728	729	731	734	738	743				
15	628	630	633	635	639	644	651	655	648	643	639	638	640	644	651				
20	507	505	503	500	499	499	500	502	506	512	506	499	497	499	506				
25	366	366	363	360	354	349	348	348	348	348	350	348	342	341	345				
30	227	230	233	234	233	231	228	223	222	222	222	223	221	219	221				
35	154	151	147	142	138	143	145	144	141	140	139	139	140	139	140				
40	96.5	97.9	98.6	98.2	96.8	94.3	91.4	92.3	93.0	92.5	91.8	91.3	91.5	91.6	91.8				
45	68.9	68.0	66.6	65.2	65.1	65.9	65.5	64.4	63.2	64.0	63.9	63.7	63.6	64.2	63.9				
50	48.9	49.3	49.5	49.5	49.0	48.0	46.9	47.5	47.3	46.7	46.8	47.0	47.0	47.2	47.0				
55	37.6	37.3	37.0	36.8	36.7	36.9	36.7	36.4	36.1	36.1	36.0	36.1	36.4	36.3	36.2				
60	28.6	28.7	28.8	29.0	28.9	28.6	28.2	28.3	28.3	28.2	28.2	28.2	28.3	28.3	28.2				
65	22.1	22.0	22.0	22.0	21.9	22.0	22.0	21.9	21.8	21.9	21.9	22.0	21.9	22.0	21.9				
70	16.2	16.2	16.3	16.3	16.2	16.3	16.3	16.3	16.3	16.3	16.4	16.4	16.4	16.4	16.4				
75	11.3	11.2	11.3	11.1	11.0	11.0	11.0	11.2	11.3	11.2	11.3	11.1	11.2	11.2	11.3				
80	6.53	6.55	6.59	6.59	6.61	6.62	6.64	6.67	6.76	6.84	6.87	6.91	6.98	7.00	7.00				
85	3.24	3.22	3.18	3.14	3.10	3.03	2.96	2.87	2.74	2.56	2.62	2.73	2.78	2.81	2.84				
90	0.07	0.07	0.06	0.06	0.05	0.04	0.04	0.04	0.04	0.04	0.05	0.05	0.05	0.06	0.07				

C Range: 0 - 360DEG
 C Interval: 5.0DEG
 Test Speed: HIGH
 Temperature:25.3DEG
 Operators:01
 Test Date:2017-02-13

g Range: 0 - 90DEG
 Interval: 0.5DEG
 Test System:EVERFINE GO-2000B_V1 SYSTEM V2.0.279
 Humidity:65.0%
 Test Distance:8.989m [K=1.0000]
 Remarks: