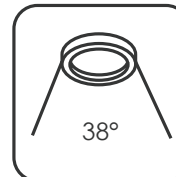
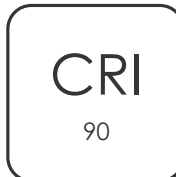
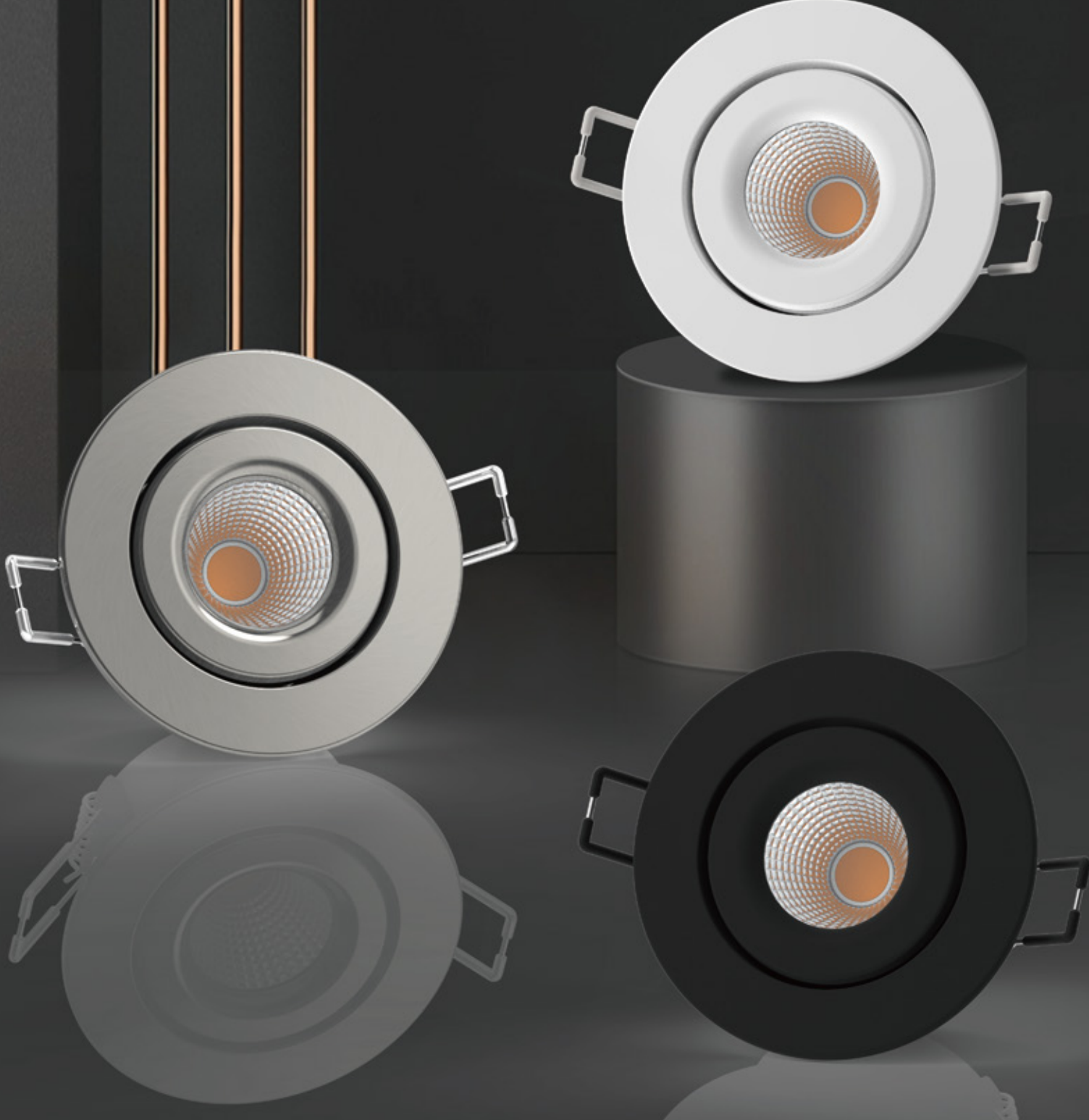


MYSTY SIDE-SWITCH 3CCT LED DOWNLIGHT



MYSTY is a tri-color LED downlight.
The unique design is we set CCT switch at its side.
Easier to change CCT than traditional way.
Aluminum housing provides not only IP65 with whole fixture but also good heat dissipation.
Which makes it suitable for many occasions.
Also provide 30° tilted angle to meet more angle requirements.



CRI ≥ 90

Like a built-in filter, the gloss is bright and full Restore true colors



CRI ≥ 90

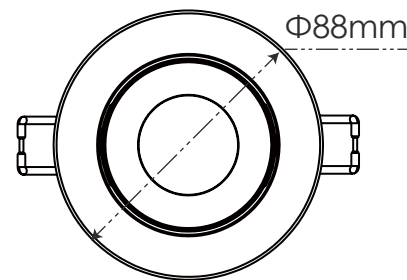
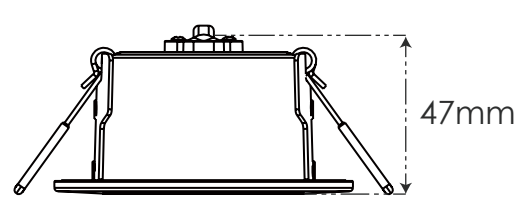
Realistic restoration of object color



CRI ≤ 80

Faint distortion & lacks aesthetics

- ◆ Tri-color switchable 2700K/3000K/4000K
- ◆ Side switch makes it more easier to change CCT
- ◆ Dim to Warm Also available at 2000K~3000K
- ◆ IP65 with whole fixture, Not only fascial
- ◆ Tool-free installation, safer than traditonal way
- ◆ Suitable for covering with insulation material directly
- ◆ Optional finished color: White/Black/Brushed
- ◆ Fire-rated version also available (Iron Housing)



Item	MYSTY Side-Switch Downlight	IP	IP65 Front
Part No.	5RS109-1	Cut Out	Φ 68mm
Power	8 W / 10 W	Driver	Isolated
Lumen Efficacy	80 lm / W	Dimmable	Trailing & Leading Edge
Input	AC 220-240V-50Hz	Size	Drawing Supplied
CRI	90	Warranty	5 Years
Beam Angle	38°	LED	COB
Lifespan	50,000hrs	Switch Cycles	100,000
House Material	Aluminum or Iron	Insulation Coverable	YES
PF	≥0.9	Standard	CE ROHS