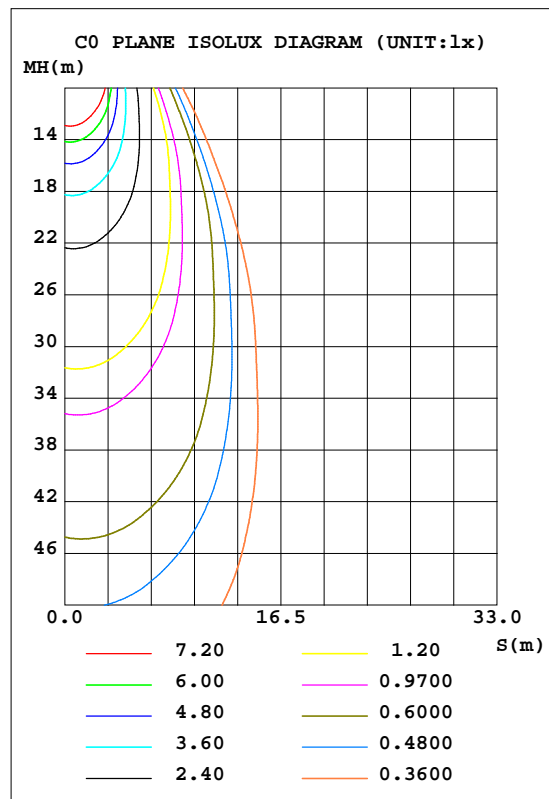
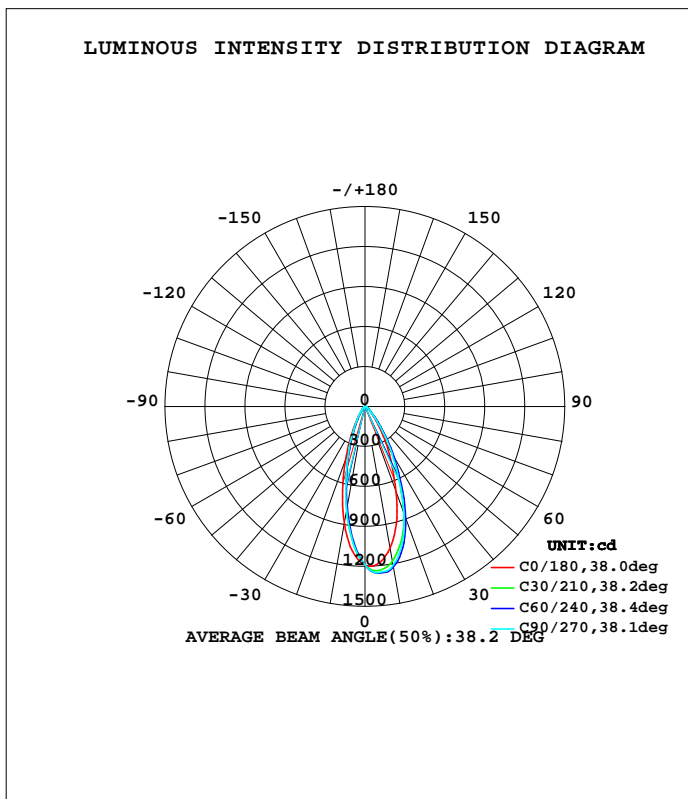


LUMINAIRE PHOTOMETRIC TEST REPORT

Test:U:230.5V I:0.0312A P:6.162W PF:0.8571 Lamp Flux:679.639x1 lm		
NAME: 5RS058-6000K	TYPE:	WEIGHT:
SPEC.:	DIM.:	SERIAL No.:001
MFR.: Suzhou Radiant Lighting Technology Co.,Ltd	SUR.:	PROTECTION ANGLE:

DATA OF LAMP		PHOTOMETRIC DATA Eff: 110.30 lm/W			
MODEL	5RS058-6000K	I <sub>max</sub> (cd)	1257	S/MH(C0/180)	0.71
NOMINAL POWER(W)	6	LOR(%)	100.0	S/MH(C90/270)	0.78
RATED VOLTAGE(V)	230	TOTAL FLUX(lm)	679.64	h UP, DN(C0-180)	0.1, 62.4
NOMINAL FLUX(lm)	679.639	CIE CLASS	DIRECT	h UP, DN(C180-360)	0.2, 37.3
LAMPS INSIDE	1	h up(%)	0.3	CIBSE SHR NOM	0.50
TEST VOLTAGE(V)	230.5	h down(%)	99.7	CIBSE SHR MAX	0.65



C Range: 0 - 360DEG  
 C Interval: 10.0DEG  
 Test Speed: HIGH  
 Temperature:25.3DEG  
 Operators:01  
 Test Date:2018-09-13

deg Range: 0 - 180DEG  
 Interval: 1.0DEG  
 Test System:EVERFINE GO-2000B\_V1 SYSTEM V2.0.279  
 Humidity:65.0%  
 Test Distance:8.989m [K=1.0000]  
 Remarks:

ZONAL FLUX DIAGRAM

ZONAL FLUX DIAGRAM:

g	C0	C45	C90	C135	C180	C225	C270	C315	g	F zone	F total	%lum,lamp
10	1080	1210	1211	1055	893.7	774.6	796.9	931.0	0- 10	103.9	103.9	15.3,15.3
20	686.8	890.2	858.1	613.3	434.3	344.1	363.3	484.1	10- 20	218.6	322.5	47.5,47.5
30	318.5	434.6	403.5	243.4	141.2	110.1	124.7	184.3	20- 30	179.7	502.2	73.9,73.9
40	109.0	156.1	135.0	79.52	43.81	38.11	43.40	60.45	30- 40	93.33	595.5	87.6,87.6
50	38.97	53.79	47.58	30.28	21.86	19.55	21.20	26.58	40- 50	40.40	635.9	93.6,93.6
60	19.72	24.11	21.67	16.30	13.06	11.56	12.45	14.70	50- 60	20.66	656.6	96.6,96.6
70	11.07	13.59	12.95	9.708	7.014	5.753	5.852	7.863	60- 70	12.58	669.2	98.5,98.5
80	4.793	6.771	6.440	4.059	2.346	1.218	1.257	2.454	70- 80	6.681	675.9	99.4,99.4
90	0.4504	1.694	1.538	0.2733	0.0245	0.0218	0.0186	0.0215	80- 90	1.950	677.8	99.7,99.7
100	0.0183	0.0217	0.0186	0.0215	0.0306	0.0280	0.0186	0.0246	90-100	0.1305	677.9	99.7,99.7
110	0.0183	0.0217	0.0311	0.0398	0.0551	0.0652	0.0621	0.0521	100-110	0.0355	678.0	99.8,99.8
120	0.0611	0.0559	0.0498	0.0675	0.1040	0.0995	0.0870	0.0767	110-120	0.0581	678.0	99.8,99.8
130	0.0795	0.0901	0.1118	0.1196	0.2141	0.2671	0.2173	0.1564	120-130	0.0976	678.1	99.8,99.8
140	0.2444	0.1958	0.2362	0.3128	0.4712	0.5811	0.5404	0.3743	130-140	0.1909	678.3	99.8,99.8
150	0.5624	0.4845	0.5219	0.6563	0.8869	1.044	0.9876	0.7760	140-150	0.3372	678.7	99.9,99.9
160	1.033	0.9352	0.9757	1.117	1.352	1.491	1.441	1.224	150-160	0.4417	679.1	99.9,99.9
170	1.486	1.423	1.435	1.515	1.676	1.761	1.721	1.573	160-170	0.3892	679.5	100,100
180	1.773	1.771	1.771	1.727	1.767	1.774	1.764	1.730	170-180	0.1580	679.6	100,100
DEG	LUMINOUS INTENSITY:cd									UNIT:lm		

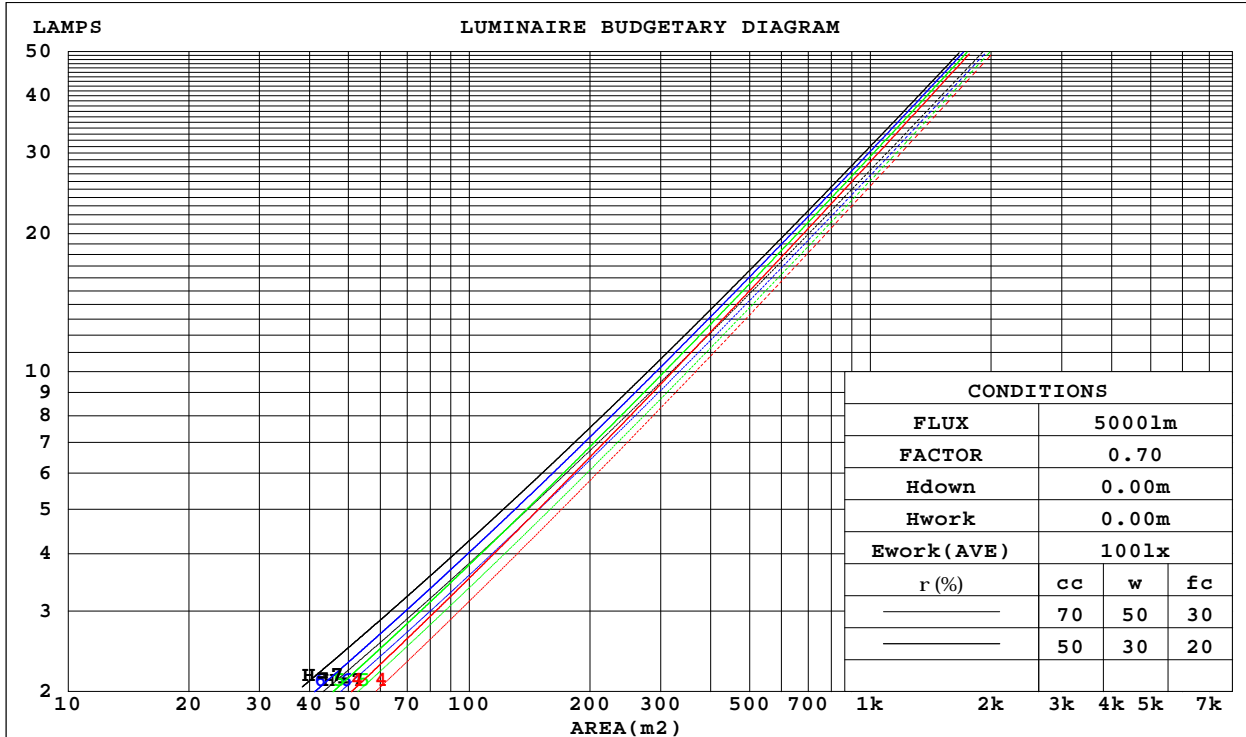
C Range: 0 - 360DEG  
 C Interval: 10.0DEG  
 Test Speed: HIGH  
 Temperature:25.3DEG  
 Operators:01  
 Test Date:2018-09-13

g Range: 0 - 180DEG  
 Interval: 1.0DEG  
 Test System:EVERFINE GO-2000B\_V1 SYSTEM V2.0.279  
 Humidity:65.0%  
 Test Distance:8.989m [K=1.0000]  
 Remarks:

CU AND LUMINAIRE BUDGETARY ESTIMATE DIAGRAM

Test:U:230.5V I:0.0312A P:6.162W PF:0.8571 Lamp Flux:679.639x1 lm		
NAME: 5RS058-6000K	TYPE:	WEIGHT:
SPEC.:	DIM.:	SERIAL No.:001
MFR.: Suzhou Radiant Lighting Technology Co.,Ltd	SUR.:	PROTECTION ANGLE:

r <sub>cc</sub>	80%			70%			50%			30%			10%			0
r <sub>w</sub>	50%	30%	10%	50%	30%	10%	50%	30%	10%	50%	30%	10%	50%	30%	10%	0
r <sub>fc</sub>	20%			20%			20%			20%			20%			0
RCR	RCR:Room Cavity Ratio						Coefficients of Utilization(CU)									
0.0	1.19	1.19	1.19	1.16	1.16	1.16	1.11	1.11	1.11	1.06	1.06	1.06	1.02	1.02	1.02	.00
1.0	1.10	1.08	1.06	1.08	1.06	1.04	1.04	1.02	1.01	1.00	.99	.98	.97	.96	.95	.93
2.0	1.03	.99	.95	1.01	.97	.94	.98	.95	.92	.95	.92	.90	.92	.90	.88	.86
3.0	.96	.91	.87	.94	.90	.86	.92	.88	.85	.89	.86	.83	.87	.84	.82	.80
4.0	.90	.84	.80	.89	.84	.80	.86	.82	.79	.84	.81	.78	.83	.79	.77	.75
5.0	.84	.79	.74	.83	.78	.74	.82	.77	.73	.80	.76	.73	.78	.75	.72	.71
6.0	.80	.74	.70	.79	.73	.69	.77	.72	.69	.76	.72	.68	.75	.71	.68	.66
7.0	.75	.70	.65	.75	.69	.65	.73	.68	.65	.72	.68	.65	.71	.67	.64	.63
8.0	.71	.66	.62	.71	.65	.62	.70	.65	.61	.69	.64	.61	.68	.64	.61	.59
9.0	.68	.62	.58	.67	.62	.58	.67	.62	.58	.66	.61	.58	.65	.61	.58	.56
10.0	.65	.59	.56	.64	.59	.55	.64	.59	.55	.63	.58	.55	.62	.58	.55	.54



C Range: 0 - 360DEG  
 C Interval: 10.0DEG  
 Test Speed: HIGH  
 Temperature:25.3DEG  
 Operators:01  
 Test Date:2018-09-13

g Range: 0 - 180DEG  
 Interval: 1.0DEG  
 Test System:EVERFINE GO-2000B\_V1 SYSTEM V2.0.279  
 Humidity:65.0%  
 Test Distance:8.989m [K=1.0000]  
 Remarks:

WEC AND CCEC

Test:U:230.5V I:0.0312A P:6.162W PF:0.8571 Lamp Flux:679.639x1 lm		
NAME: 5RS058-6000K	TYPE:	WEIGHT:
SPEC.:	DIM.:	SERIAL No.:001
MFR.: Suzhou Radiant Lighting Technology Co.,Ltd	SUR.:	PROTECTION ANGLE:

rcc	80%			70%			50%			30%			10%			0
rw	50%	30%	10%	50%	30%	10%	50%	30%	10%	50%	30%	10%	50%	30%	10%	0
rfc	20%			20%			20%			20%			20%			0
RCR	RCR:Room Cavity Ratio						Wall Exitance Coefficients(WEC)									
0.0																
1.0	.184	.104	.033	.177	.101	.032	.164	.094	.030	.152	.088	.028	.142	.082	.026	
2.0	.174	.095	.029	.168	.093	.029	.158	.088	.027	.148	.083	.026	.138	.078	.025	
3.0	.164	.087	.026	.159	.085	.026	.150	.081	.025	.142	.078	.024	.134	.074	.023	
4.0	.155	.080	.024	.151	.079	.023	.143	.076	.023	.135	.073	.022	.128	.070	.021	
5.0	.146	.075	.022	.143	.073	.021	.136	.071	.021	.129	.068	.020	.123	.066	.020	
6.0	.139	.070	.020	.136	.068	.020	.129	.066	.019	.124	.064	.019	.118	.062	.019	
7.0	.132	.065	.018	.129	.064	.018	.124	.062	.018	.119	.061	.018	.114	.059	.017	
8.0	.125	.061	.017	.123	.061	.017	.118	.059	.017	.114	.058	.017	.109	.056	.016	
9.0	.120	.058	.016	.117	.057	.016	.113	.056	.016	.109	.055	.016	.105	.054	.015	
10.0	.114	.055	.015	.112	.054	.015	.109	.053	.015	.105	.052	.015	.101	.051	.015	

rcc	80%			70%			50%			30%			10%			0
rw	50%	30%	10%	50%	30%	10%	50%	30%	10%	50%	30%	10%	50%	30%	10%	0
rfc	20%			20%			20%			20%			20%			0
RCR	RCR:Room Cavity Ratio						Ceiling Cavity Exitance Coefficients(CCEC)									
0.0	.193	.193	.193	.165	.165	.165	.112	.112	.112	.065	.065	.065	.021	.021	.021	
1.0	.174	.159	.146	.149	.137	.126	.102	.094	.087	.059	.054	.051	.019	.018	.016	
2.0	.159	.135	.114	.136	.116	.099	.093	.080	.069	.054	.047	.040	.017	.015	.013	
3.0	.146	.116	.091	.125	.100	.079	.086	.069	.056	.050	.040	.033	.016	.013	.011	
4.0	.136	.101	.074	.116	.087	.065	.080	.061	.046	.046	.036	.027	.015	.012	.009	
5.0	.127	.089	.062	.109	.077	.054	.075	.054	.038	.043	.032	.023	.014	.010	.007	
6.0	.119	.080	.052	.102	.069	.045	.071	.049	.032	.041	.029	.019	.013	.009	.006	
7.0	.112	.072	.044	.097	.063	.039	.067	.044	.027	.039	.026	.016	.013	.008	.005	
8.0	.106	.066	.039	.091	.057	.034	.063	.040	.024	.037	.024	.014	.012	.008	.005	
9.0	.101	.061	.034	.087	.053	.029	.060	.037	.021	.035	.022	.012	.011	.007	.004	
10.0	.096	.056	.030	.083	.049	.026	.058	.034	.019	.034	.020	.011	.011	.007	.004	

C Range: 0 - 360DEG  
 C Interval: 10.0DEG  
 Test Speed: HIGH  
 Temperature:25.3DEG  
 Operators:01  
 Test Date:2018-09-13

g Range: 0 - 180DEG  
 Interval: 1.0DEG  
 Test System:EVERFINE GO-2000B\_V1 SYSTEM V2.0.279  
 Humidity:65.0%  
 Test Distance:8.989m [K=1.0000]  
 Remarks:

Uncorrected UGR Table

Test:U:230.5V I:0.0312A P:6.162W PF:0.8571 Lamp Flux:679.639x1 lm										
NAME: 5RS058-6000K					TYPE:			WEIGHT:		
SPEC.:					DIM.:			SERIAL No.:001		
MFR.: Suzhou Radiant Lighting Technology Co.,Ltd					SUR.:			PROTECTION ANGLE:		
ceiling/cavity	0.7	0.7	0.5	0.5	0.3	0.7	0.7	0.5	0.5	0.3
walls	0.5	0.3	0.5	0.3	0.3	0.5	0.3	0.5	0.3	0.3
working plane	0.2	0.2	0.2	0.2	0.2	0.2	0.2	0.2	0.2	0.2
Room dimensions	Viewed crosswise					Viewed endwise				
x = 2H y = 2H	24.5	25.4	24.7	25.6	25.8	25.0	26.0	25.3	26.1	26.3
3H	24.8	25.7	25.1	25.9	26.1	25.3	26.2	25.6	26.4	26.6
4H	25.0	25.8	25.2	26.0	26.2	25.5	26.3	25.7	26.5	26.7
6H	25.1	25.8	25.4	26.1	26.3	25.6	26.4	25.9	26.6	26.9
8H	25.1	25.8	25.4	26.1	26.4	25.7	26.4	26.0	26.7	27.0
12H	25.1	25.8	25.4	26.1	26.4	25.8	26.5	26.1	26.8	27.0
4H 2H	24.5	25.4	24.8	25.6	25.8	25.0	25.9	25.3	26.1	26.3
3H	25.1	25.8	25.4	26.0	26.3	25.4	26.1	25.8	26.4	26.7
4H	25.3	26.0	25.7	26.3	26.6	25.7	26.4	26.1	26.7	27.0
6H	25.6	26.1	26.0	26.5	26.8	26.0	26.6	26.4	26.9	27.3
8H	25.7	26.2	26.0	26.5	26.9	26.1	26.7	26.5	27.0	27.4
12H	25.7	26.2	26.1	26.6	27.0	26.3	26.8	26.7	27.1	27.5
8H 4H	25.5	26.0	25.8	26.3	26.7	25.8	26.3	26.2	26.7	27.1
6H	25.8	26.3	26.2	26.7	27.1	26.2	26.6	26.6	27.0	27.5
8H	26.0	26.4	26.4	26.8	27.2	26.4	26.8	26.9	27.2	27.7
12H	26.1	26.4	26.6	26.9	27.3	26.6	27.0	27.1	27.4	27.9
12H 4H	25.4	25.9	25.9	26.3	26.7	25.8	26.3	26.2	26.6	27.0
6H	25.8	26.2	26.3	26.7	27.1	26.2	26.6	26.7	27.0	27.5
8H	26.0	26.4	26.5	26.8	27.3	26.5	26.8	27.0	27.3	27.7
Variations with the observer position at spacings:										
S = 1.0H	+ 1.1 / - 1.5					+ 1.2 / - 1.6				
1.5H	+ 1.9 / - 1.5					+ 2.1 / - 1.4				
2.0H	+ 1.5 / - 1.1					+ 1.9 / - 1.0				

CIE Pub.117 Corrected 679.6 lm Total Lamp Luminous Flux.(8log(F/F0) = -1.3)

C Range: 0 - 360DEG  
 C Interval: 10.0DEG  
 Test Speed: HIGH  
 Temperature:25.3DEG  
 Operators:01  
 Test Date:2018-09-13

g Range: 0 - 180DEG  
 Interval: 1.0DEG  
 Test System:EVERFINE GO-2000B\_V1 SYSTEM V2.0.279  
 Humidity:65.0%  
 Test Distance:8.989m [K=1.0000]  
 Remarks:

UTILIZATION FACTORS TABLE

Test:U:230.5V I:0.0312A P:6.162W PF:0.8571 Lamp Flux:679.639x1 lm		
NAME: 5RS058-6000K	TYPE:	WEIGHT:
SPEC.:	DIM.:	SERIAL No.:001
MFR.: Suzhou Radiant Lighting Technology Co.,Ltd	SUR.:	PROTECTION ANGLE:

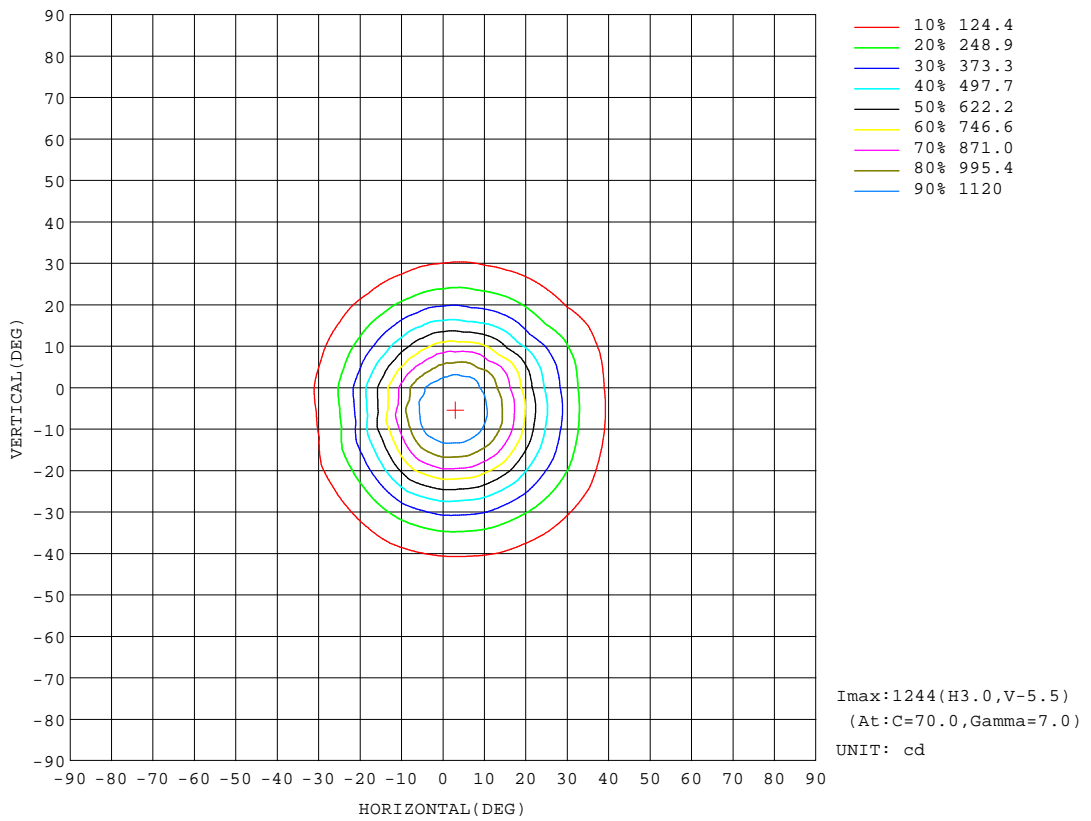
REFLECTANCE										
Ceiling	0.8	0.8	0.8	0.7	0.7	0.7	0.5	0.5	0.5	0
Walls	0.7	0.5	0.3	0.7	0.5	0.3	0.7	0.5	0.3	0
Working plane	0.2	0.2	0.2	0.2	0.2	0.2	0.2	0.2	0.2	0
ROOM INDEX	UTILIZATION FACTORS(PERCENT) k(RI) x RCR = 5									
k = 0.60	84	77	73	83	77	73	82	76	73	69
0.80	92	85	81	91	85	81	90	84	80	76
1.00	97	90	86	96	90	86	94	90	85	81
1.25	101	95	91	100	94	91	98	93	90	85
1.50	104	99	95	103	98	94	100	96	93	88
2.00	107	102	99	105	101	98	103	99	96	91
2.50	109	105	101	107	103	100	104	101	98	92
3.00	111	107	104	109	105	103	105	103	100	94
4.00	113	110	107	111	108	106	107	105	103	96
5.00	114	112	110	112	110	108	108	106	105	97
ROOM INDEX	UF(total)									Direct
According to DIN EN 13032-2 2004			Suspended				SHRNOM = 1.25			

C Range: 0 - 360DEG  
 C Interval: 10.0DEG  
 Test Speed: HIGH  
 Temperature:25.3DEG  
 Operators:01  
 Test Date:2018-09-13

g Range: 0 - 180DEG  
 Interval: 1.0DEG  
 Test System:EVERFINE GO-2000B\_V1 SYSTEM V2.0.279  
 Humidity:65.0%  
 Test Distance:8.989m [K=1.0000]  
 Remarks:

ISOCANDELA DIAGRAM

Test:U:230.5V I:0.0312A P:6.162W PF:0.8571 Lamp Flux:679.639x1 lm		
NAME: 5RS058-6000K	TYPE:	WEIGHT:
SPEC.:	DIM.:	SERIAL No.:001
MFR.: Suzhou Radiant Lighting Technology Co.,Ltd	SUR.:	PROTECTION ANGLE:



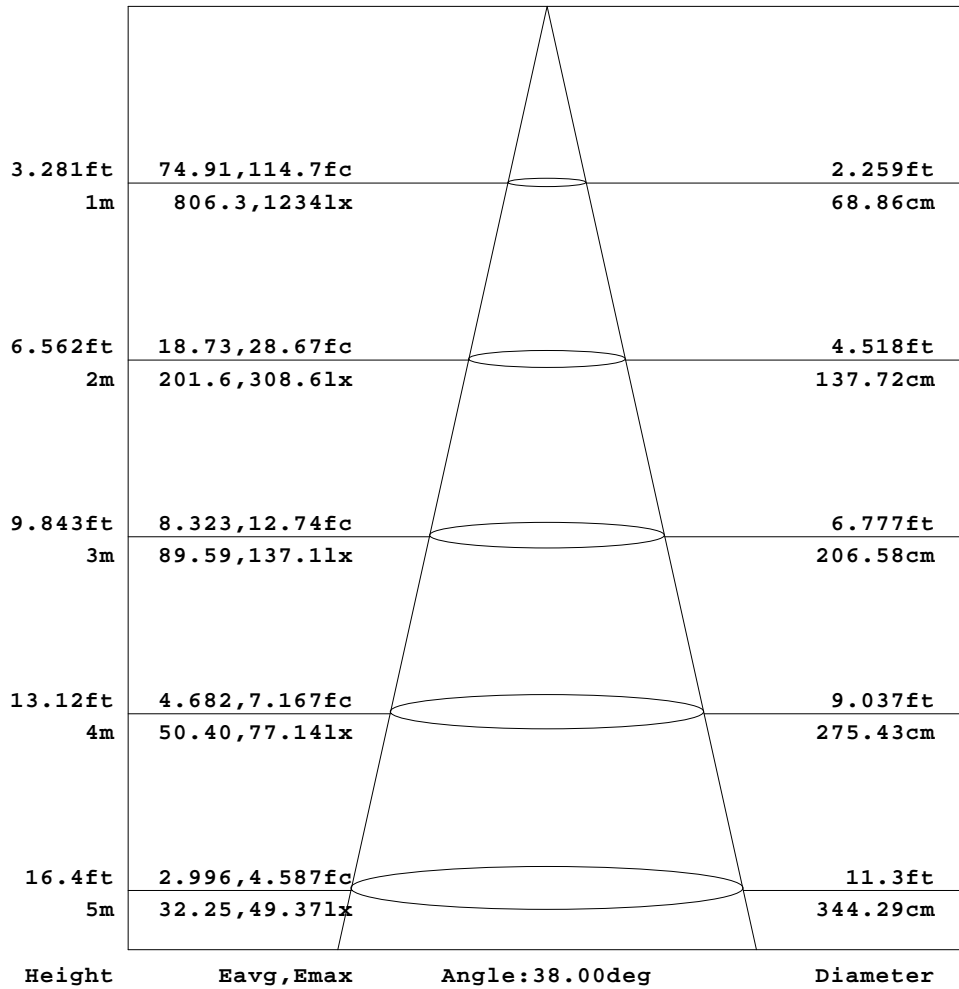
C Range: 0 - 360DEG  
C Interval: 10.0DEG  
Test Speed: HIGH  
Temperature:25.3DEG  
Operators:01  
Test Date:2018-09-13

Range: 0 - 180DEG  
Interval: 1.0DEG  
Test System:EVERFINE GO-2000B\_V1 SYSTEM V2.0.279  
Humidity:65.0%  
Test Distance:8.989m [K=1.0000]  
Remarks:

AAI Figure

Test:U:230.5V I:0.0312A P:6.162W PF:0.8571 Lamp Flux:679.639x1 lm		
NAME: 5RS058-6000K	TYPE:	WEIGHT:
SPEC.:	DIM.:	SERIAL No.:001
MFR.: Suzhou Radiant Lighting Technology Co.,Ltd	SUR.:	PROTECTION ANGLE:

Flux out:300.3 lm



Note:The Curves indicate the illuminated area and the average illumination when the luminaire is at different distance.

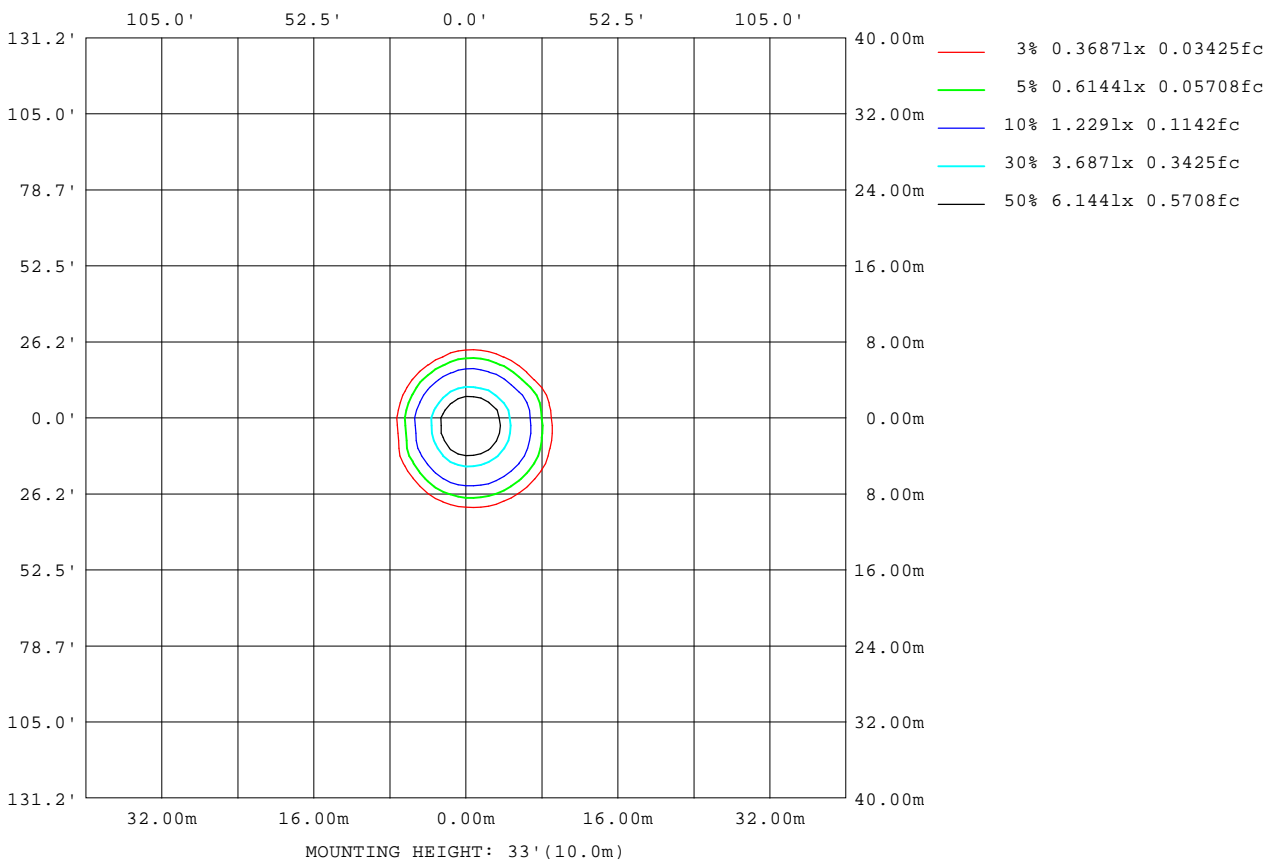
C Range: 0 - 360DEG  
 C Interval: 10.0DEG  
 Test Speed: HIGH  
 Temperature:25.3DEG  
 Operators:01  
 Test Date:2018-09-13

g Range: 0 - 180DEG  
 Interval: 1.0DEG  
 Test System:EVERFINE GO-2000B\_V1 SYSTEM V2.0.279  
 Humidity:65.0%  
 Test Distance:8.989m [K=1.0000]  
 Remarks:



ISOLUX DIAGRAM

Test:U:230.5V I:0.0312A P:6.162W PF:0.8571 Lamp Flux:679.639x1 lm		
NAME: 5RS058-6000K	TYPE:	WEIGHT:
SPEC.:	DIM.:	SERIAL No.:001
MFR.: Suzhou Radiant Lighting Technology Co.,Ltd	SUR.:	PROTECTION ANGLE:

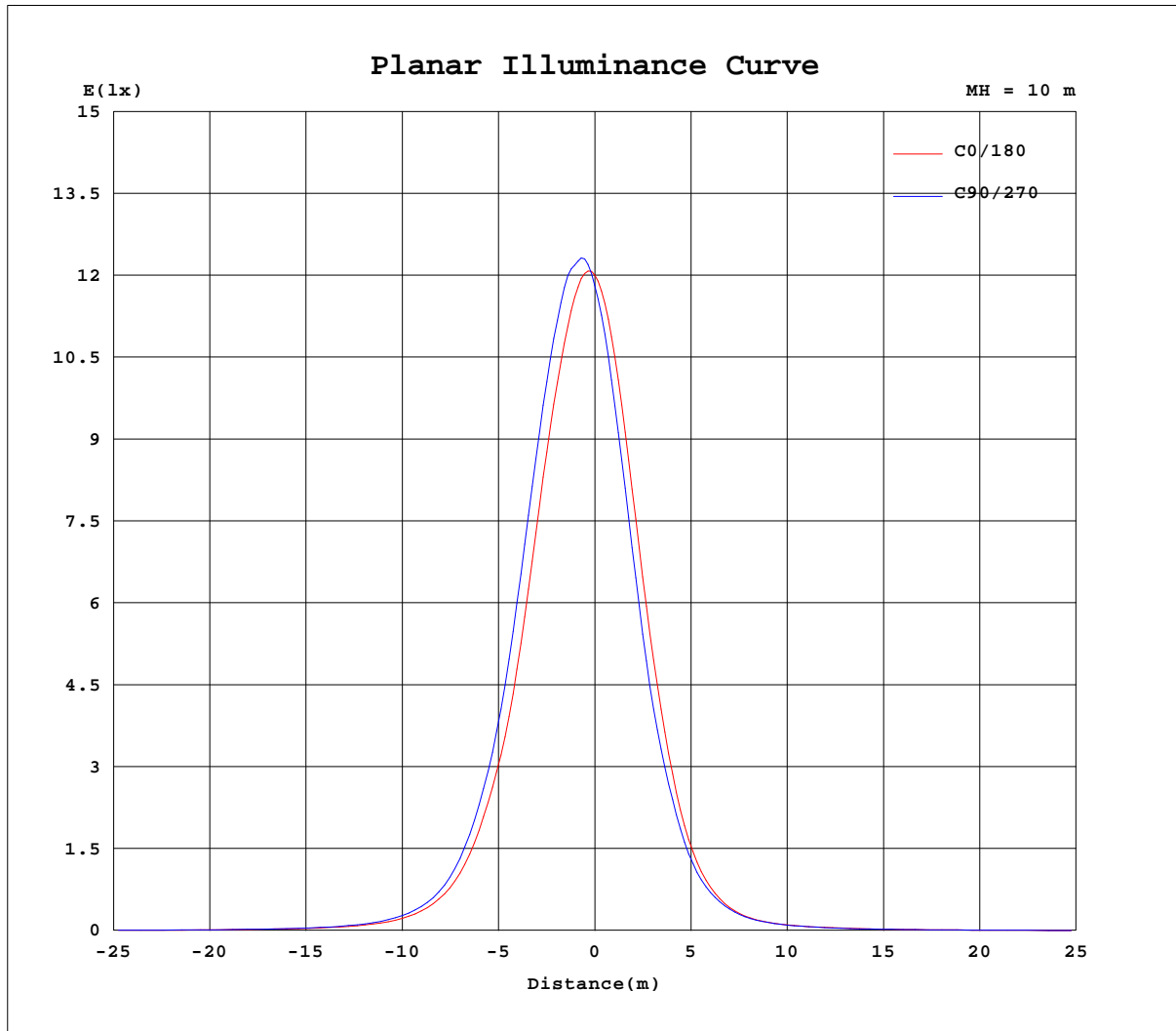


C Range: 0 - 360DEG  
 C Interval: 10.0DEG  
 Test Speed: HIGH  
 Temperature: 25.3DEG  
 Operators: 01  
 Test Date: 2018-09-13

Range: 0 - 180DEG  
 Interval: 1.0DEG  
 Test System: EVERFINE GO-2000B\_V1 SYSTEM V2.0.279  
 Humidity: 65.0%  
 Test Distance: 8.989m [K=1.0000]  
 Remarks:

E:\周磊\eco-aw\5RS058-6000K.GOS

Planar Illuminance Curve



C Range: 0 - 360DEG  
 C Interval: 10.0DEG  
 Test Speed: HIGH  
 Temperature: 25.3DEG  
 Operators: 01  
 Test Date: 2018-09-13

deg Range: 0 - 180DEG  
 Interval: 1.0DEG  
 Test System: EVERFINE GO-2000B\_V1 SYSTEM V2.0.279  
 Humidity: 65.0%  
 Test Distance: 8.989m [K=1.0000]  
 Remarks:

E:\周磊\eco-aw\5RS058-6000K.GOS

LUMINOUS DISTRIBUTION INTENSITY DATA

Test:U:230.5V I:0.0312A P:6.162W PF:0.8571 Lamp Flux:679.639x1 lm		
NAME: 5RS058-6000K	TYPE:	WEIGHT:
SPEC.:	DIM.:	SERIAL No.:001
MFR.: Suzhou Radiant Lighting Technology Co.,Ltd	SUR.:	PROTECTION ANGLE:

Table--1

UNIT: cd

C(DEG) g (DEG)	0	10	20	30	40	50	60	70	80	90	100	110	120	130	140	150	160	170	180
0	1190	1190	1190	1190	1190	1190	1190	1190	1190	1190	1190	1190	1190	1190	1190	1190	1190	1190	1190
5	1182	1204	1217	1236	1245	1255	1254	1257	1248	1248	1243	1241	1217	1187	1164	1149	1111	1094	1090
10	1080	1118	1146	1182	1199	1221	1225	1231	1214	1211	1191	1176	1130	1076	1033	1005	931	900	894
15	913	966	1001	1049	1074	1098	1097	1101	1078	1074	1043	1018	952	884	824	784	696	663	653
20	687	751	794	850	877	903	897	896	865	858	822	796	725	646	581	547	468	439	434
25	472	521	555	602	628	656	651	647	617	607	580	560	497	434	382	350	282	257	256
30	319	351	378	413	426	443	438	436	412	403	377	356	307	260	227	204	156	141	141
35	190	209	235	265	273	276	270	269	252	242	222	203	173	146	127	115	86.7	76.3	76.8
40	109	122	135	153	155	157	153	153	141	135	125	116	99.2	84.9	74.2	65.6	48.8	43.5	43.8
45	62.9	70.1	77.7	89.3	89.9	91.2	89.2	88.6	82.5	78.1	72.3	66.6	57.4	50.2	44.4	39.2	30.9	28.4	29.0
50	39.0	42.6	46.5	51.8	53.6	54.0	52.4	52.1	49.5	47.6	43.1	39.8	34.9	31.8	28.7	26.1	22.4	21.2	21.9
55	27.0	29.0	30.8	33.3	34.1	34.6	33.0	33.0	31.4	30.5	28.4	26.9	24.3	22.3	20.7	19.4	17.2	16.4	16.9
60	19.7	21.0	22.0	23.4	24.0	24.2	23.1	22.9	22.0	21.7	20.5	19.8	18.1	16.8	15.8	14.9	13.4	12.7	13.1
65	14.7	15.8	17.4	18.3	17.8	17.7	16.9	16.9	16.3	16.2	15.4	14.9	13.7	12.8	12.2	11.8	10.3	9.62	9.88
70	11.1	12.2	13.7	14.4	13.9	13.2	12.7	12.9	12.8	12.9	11.9	11.2	10.3	9.77	9.65	9.31	7.64	6.91	7.01
75	7.90	8.73	9.89	10.8	10.4	9.91	9.59	9.88	9.89	9.79	9.02	8.24	7.37	6.96	6.56	6.17	4.89	4.40	4.41
80	4.79	5.41	6.12	6.84	6.78	6.76	6.56	6.80	6.68	6.44	5.89	5.49	4.78	4.33	3.79	3.49	2.59	2.30	2.35
85	2.30	2.68	3.01	3.58	3.86	4.01	3.91	4.01	3.81	3.73	3.34	3.14	2.55	2.13	1.78	1.51	0.85	0.56	0.52
90	0.45	0.83	1.17	1.45	1.64	1.75	1.75	1.74	1.61	1.54	1.37	1.21	0.83	0.40	0.15	0.04	0.02	0.02	0.02
95	0.02	0.02	0.02	0.02	0.04	0.06	0.08	0.07	0.05	0.02	0.03	0.02	0.02	0.02	0.03	0.02	0.02	0.02	0.02
100	0.02	0.02	0.02	0.02	0.02	0.02	0.02	0.03	0.02	0.02	0.02	0.02	0.02	0.02	0.02	0.02	0.02	0.03	0.03
105	0.02	0.02	0.02	0.04	0.02	0.02	0.02	0.02	0.02	0.02	0.02	0.02	0.02	0.03	0.02	0.03	0.04	0.04	0.04
110	0.02	0.03	0.02	0.03	0.02	0.02	0.02	0.03	0.02	0.03	0.02	0.04	0.03	0.04	0.04	0.05	0.06	0.06	0.06
115	0.04	0.04	0.03	0.04	0.02	0.04	0.03	0.04	0.04	0.04	0.05	0.04	0.05	0.05	0.06	0.06	0.07	0.07	0.07
120	0.06	0.05	0.06	0.06	0.06	0.06	0.06	0.06	0.06	0.05	0.06	0.06	0.07	0.07	0.07	0.07	0.07	0.10	0.10
125	0.08	0.07	0.07	0.07	0.07	0.07	0.07	0.07	0.07	0.08	0.07	0.08	0.08	0.10	0.07	0.11	0.10	0.13	0.14
130	0.08	0.10	0.08	0.10	0.09	0.09	0.08	0.10	0.08	0.11	0.08	0.12	0.09	0.14	0.10	0.17	0.17	0.21	0.21
135	0.14	0.15	0.12	0.14	0.11	0.14	0.10	0.14	0.11	0.16	0.13	0.17	0.15	0.20	0.18	0.25	0.26	0.31	0.32
140	0.24	0.25	0.20	0.22	0.18	0.21	0.18	0.22	0.19	0.24	0.20	0.25	0.25	0.31	0.31	0.36	0.40	0.47	0.47
145	0.37	0.38	0.34	0.35	0.30	0.34	0.29	0.34	0.31	0.36	0.34	0.38	0.38	0.45	0.47	0.53	0.59	0.65	0.65
150	0.56	0.55	0.50	0.52	0.47	0.50	0.46	0.51	0.48	0.52	0.50	0.57	0.57	0.65	0.66	0.73	0.83	0.87	0.89
155	0.79	0.79	0.73	0.72	0.68	0.70	0.66	0.72	0.70	0.73	0.72	0.79	0.78	0.87	0.89	0.96	1.04	1.10	1.11
160	1.03	1.03	0.97	0.97	0.93	0.94	0.91	0.95	0.95	0.98	0.96	1.01	1.03	1.10	1.13	1.17	1.26	1.31	1.35
165	1.27	1.27	1.22	1.21	1.18	1.19	1.17	1.20	1.18	1.21	1.19	1.25	1.25	1.33	1.35	1.39	1.45	1.49	1.55
170	1.49	1.49	1.44	1.45	1.42	1.43	1.41	1.43	1.42	1.44	1.44	1.47	1.47	1.51	1.52	1.55	1.61	1.63	1.68
175	1.67	1.67	1.65	1.65	1.63	1.63	1.63	1.63	1.62	1.63	1.64	1.64	1.64	1.66	1.66	1.68	1.71	1.71	1.77
180	1.77	1.78	1.77	1.78	1.77	1.78	1.77	1.78	1.76	1.77	1.76	1.76	1.74	1.73	1.72	1.74	1.73	1.73	1.77

C Range: 0 - 360DEG  
 C Interval: 10.0DEG  
 Test Speed: HIGH  
 Temperature:25.3DEG  
 Operators:01  
 Test Date:2018-09-13

g Range: 0 - 180DEG  
 Interval: 1.0DEG  
 Test System:EVERFINE GO-2000B\_V1 SYSTEM V2.0.279  
 Humidity:65.0%  
 Test Distance:8.989m [K=1.0000]  
 Remarks:

LUMINOUS DISTRIBUTION INTENSITY DATA

Test:U:230.5V I:0.0312A P:6.162W PF:0.8571 Lamp Flux:679.639x1 lm		
NAME: 5RS058-6000K	TYPE:	WEIGHT:
SPEC.:	DIM.:	SERIAL No.:001
MFR.: Suzhou Radiant Lighting Technology Co.,Ltd	SUR.:	PROTECTION ANGLE:

Table--2

UNIT: cd

C(DEG) g (DEG)	190	200	210	220	230	240	250	260	270	280	290	300	310	320	330	340	350		
0	1190	1190	1190	1190	1190	1190	1190	1190	1190	1190	1190	1190	1190	1190	1190	1190	1190		
5	1065	1049	1030	1022	1010	1012	1010	1023	1026	1040	1047	1066	1087	1107	1121	1159	1175		
10	853	828	796	783	766	769	769	788	797	819	833	870	912	950	972	1037	1067		
15	604	578	547	538	528	534	531	548	551	571	587	629	680	728	765	857	898		
20	395	376	356	347	341	343	343	359	363	378	386	419	461	507	536	624	670		
25	230	218	205	201	194	198	200	213	219	235	245	269	300	327	353	419	456		
30	126	121	114	113	107	110	112	120	125	134	140	154	176	193	217	280	311		
35	69.1	67.2	64.0	64.2	60.6	61.7	62.2	67.4	72.4	77.4	81.0	87.9	99.0	110	126	168	186		
40	40.2	39.6	38.8	38.6	37.6	37.6	38.6	40.4	43.4	46.0	48.3	51.6	56.8	64.2	72.5	95.8	106		
45	27.3	26.7	26.2	26.3	25.9	26.5	27.0	27.9	29.1	30.4	31.7	33.5	36.1	39.8	44.3	55.2	61.0		
50	20.8	20.3	19.7	19.7	19.4	19.7	20.0	20.6	21.2	22.0	22.6	23.8	25.5	27.7	30.0	35.0	37.6		
55	16.1	15.7	15.2	15.1	14.9	14.9	15.1	15.5	16.0	16.8	17.3	17.7	18.9	20.4	21.6	24.5	25.8		
60	12.4	12.1	11.8	11.7	11.4	11.3	11.4	11.7	12.5	13.5	13.9	13.8	14.2	15.2	17.0	19.2	19.0		
65	9.31	9.24	9.09	9.03	8.62	8.36	8.19	8.70	9.31	10.1	10.2	10.4	10.7	11.5	13.0	15.1	14.6		
70	6.50	6.40	6.07	5.92	5.58	5.41	5.26	5.54	5.85	6.33	6.44	6.86	7.47	8.25	9.47	11.2	11.1		
75	3.98	3.77	3.45	3.32	3.04	3.01	2.95	3.13	3.23	3.46	3.59	3.92	4.55	5.12	5.91	7.32	7.71		
80	1.99	1.73	1.46	1.30	1.14	1.10	1.08	1.21	1.26	1.39	1.52	1.83	2.27	2.63	3.05	4.09	4.56		
85	0.24	0.07	0.04	0.02	0.03	0.02	0.03	0.02	0.03	0.02	0.04	0.13	0.51	0.90	1.22	1.80	2.16		
90	0.02	0.02	0.02	0.02	0.02	0.02	0.02	0.02	0.02	0.02	0.02	0.02	0.02	0.02	0.02	0.10	0.39		
95	0.02	0.02	0.02	0.04	0.02	0.04	0.02	0.02	0.02	0.02	0.02	0.02	0.02	0.02	0.02	0.02	0.02		
100	0.02	0.04	0.02	0.03	0.02	0.04	0.04	0.03	0.02	0.03	0.02	0.02	0.02	0.02	0.02	0.04	0.02		
105	0.04	0.04	0.05	0.04	0.06	0.05	0.06	0.05	0.05	0.05	0.03	0.04	0.04	0.04	0.02	0.04	0.02		
110	0.06	0.06	0.06	0.07	0.06	0.06	0.06	0.06	0.06	0.06	0.06	0.06	0.06	0.04	0.04	0.05	0.04		
115	0.07	0.07	0.08	0.07	0.07	0.09	0.07	0.08	0.09	0.07	0.07	0.06	0.07	0.06	0.06	0.06	0.06		
120	0.09	0.11	0.08	0.12	0.08	0.12	0.08	0.11	0.09	0.11	0.08	0.09	0.09	0.07	0.07	0.07	0.06		
125	0.12	0.17	0.17	0.19	0.17	0.19	0.16	0.17	0.14	0.15	0.11	0.13	0.09	0.10	0.07	0.09	0.08		
130	0.19	0.25	0.24	0.28	0.26	0.29	0.25	0.26	0.22	0.24	0.19	0.22	0.16	0.15	0.10	0.14	0.09		
135	0.31	0.37	0.36	0.42	0.39	0.42	0.38	0.40	0.37	0.37	0.31	0.31	0.23	0.24	0.18	0.20	0.15		
140	0.48	0.54	0.56	0.58	0.58	0.61	0.57	0.58	0.54	0.54	0.48	0.47	0.37	0.37	0.31	0.31	0.24		
145	0.68	0.75	0.76	0.81	0.82	0.83	0.80	0.79	0.76	0.74	0.70	0.67	0.56	0.55	0.47	0.46	0.38		
150	0.91	0.97	1.00	1.05	1.04	1.07	1.04	1.02	0.99	0.98	0.94	0.90	0.79	0.77	0.69	0.65	0.56		
155	1.15	1.21	1.26	1.29	1.28	1.29	1.27	1.25	1.25	1.21	1.17	1.13	1.01	0.9995	0.92	0.88	0.78		
160	1.37	1.42	1.45	1.50	1.48	1.50	1.48	1.46	1.44	1.41	1.37	1.33	1.24	1.21	1.15	1.11	1.02		
165	1.57	1.61	1.65	1.65	1.66	1.66	1.65	1.63	1.62	1.58	1.55	1.51	1.42	1.40	1.35	1.32	1.24		
170	1.71	1.72	1.75	1.77	1.76	1.75	1.74	1.72	1.72	1.70	1.66	1.64	1.58	1.56	1.52	1.50	1.44		
175	1.78	1.80	1.80	1.80	1.79	1.79	1.78	1.78	1.77	1.77	1.74	1.73	1.69	1.67	1.66	1.65	1.62		
180	1.77	1.77	1.78	1.77	1.78	1.77	1.78	1.76	1.76	1.75	1.77	1.74	1.74	1.72	1.74	1.73	1.73		

C Range: 0 - 360DEG  
 C Interval: 10.0DEG  
 Test Speed: HIGH  
 Temperature:25.3DEG  
 Operators:01  
 Test Date:2018-09-13

g Range: 0 - 180DEG  
 Interval: 1.0DEG  
 Test System:EVERFINE GO-2000B\_V1 SYSTEM V2.0.279  
 Humidity:65.0%  
 Test Distance:8.989m [K=1.0000]  
 Remarks: