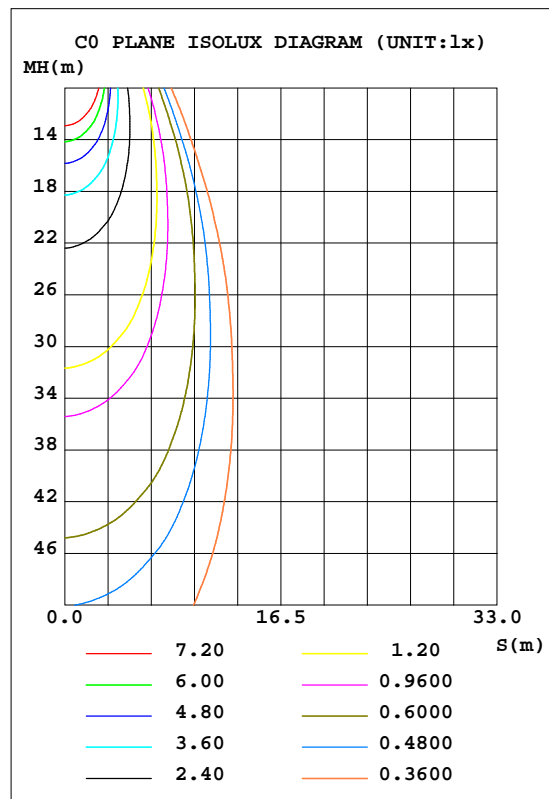
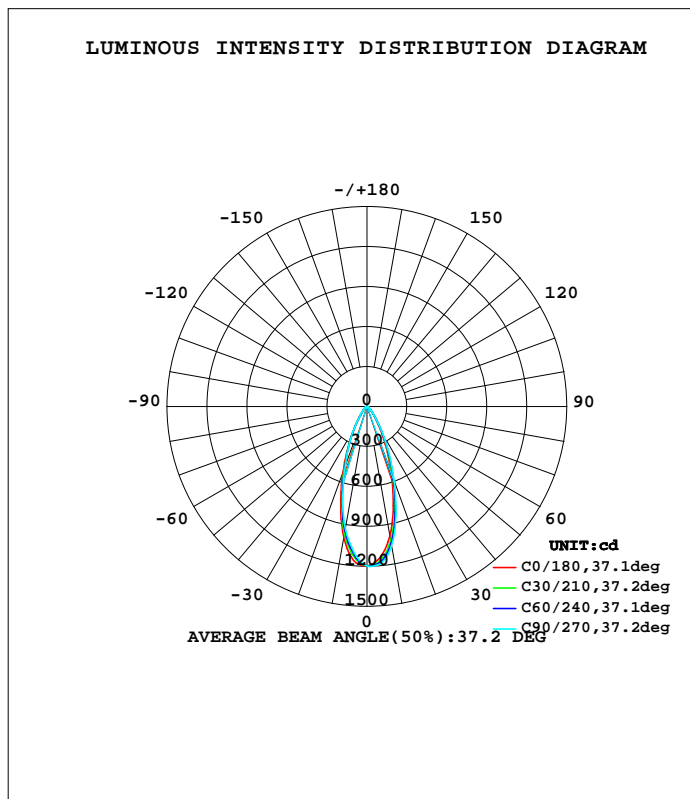


LUMINAIRE PHOTOMETRIC TEST REPORT

Test:U:230.6V I:0.0287A P:5.770W PF:0.8723 Lamp Flux:627.55x1 lm		
NAME: 5RS063-6000K	TYPE:	WEIGHT:
SPEC.:	DIM.:	SERIAL No.:001
MFR.: Suzhou Radiant Lighting Technology Co.,Ltd	SUR.:	PROTECTION ANGLE:

DATA OF LAMP		PHOTOMETRIC DATA Eff: 108.76 lm/W			
MODEL	E5RS063-6000K	I _{max} (cd)	1201	S/MH(C0/180)	0.61
NOMINAL POWER(W)	6	LOR(%)	100.0	S/MH(C90/270)	0.65
RATED VOLTAGE(V)	230	TOTAL FLUX(lm)	627.55	h UP, DN(C0-180)	0.0, 52.2
NOMINAL FLUX(lm)	627.55	CIE CLASS	DIRECT	h UP, DN(C180-360)	0.0, 47.8
LAMPS INSIDE	1	h up(%)	0.0	CIBSE SHR NOM	0.50
TEST VOLTAGE(V)	230.6	h down(%)	100.0	CIBSE SHR MAX	0.65



C Range: 0 - 360DEG
 C Interval: 10.0DEG
 Test Speed: HIGH
 Temperature:25.3DEG
 Operators:01
 Test Date:2017-11-16

deg Range: 0 - 90DEG
 Interval: 1.0DEG
 Test System:EVERFINE GO-2000B_V1 SYSTEM V2.0.279
 Humidity:65.0%
 Test Distance:8.989m [K=1.0000]
 Remarks:

ZONAL FLUX DIAGRAM

ZONAL FLUX DIAGRAM:

g	C0	C45	C90	C135	C180	C225	C270	C315	g	F zone	F total	%lum,lamp
10	991.3	1034	1063	1040	1001	963.6	936.1	952.3	0- 10	104.6	104.6	16.7,16.7
20	534.8	573.6	598.7	569.9	530.8	495.0	482.8	505.8	10- 20	211.2	315.8	50.3,50.3
30	209.6	236.1	243.7	213.4	196.3	199.9	195.2	198.5	20- 30	161.7	477.5	76.1,76.1
40	69.66	76.22	77.73	67.39	62.97	67.50	66.52	69.13	30- 40	77.70	555.2	88.5,88.5
50	28.96	30.42	30.25	27.89	26.85	28.30	27.56	28.76	40- 50	34.38	589.6	94,94
60	15.25	16.20	16.13	15.26	14.85	15.25	15.35	15.04	50- 60	18.73	608.3	96.9,96.9
70	8.365	9.707	9.804	8.543	8.223	8.787	8.721	8.396	60- 70	11.79	620.1	98.8,98.8
80	2.927	3.571	3.818	3.162	2.847	2.612	2.419	2.644	70- 80	6.113	626.2	99.8,99.8
90	0.0184	0.0708	0.1051	0.0464	0	0	0.0062	0	80- 90	1.328	627.5	100,100
100									90-100			
110									100-110			
120									110-120			
130									120-130			
140									130-140			
150									140-150			
160									150-160			
170									160-170			
180									170-180			
DEG	LUMINOUS INTENSITY:cd									UNIT:lm		

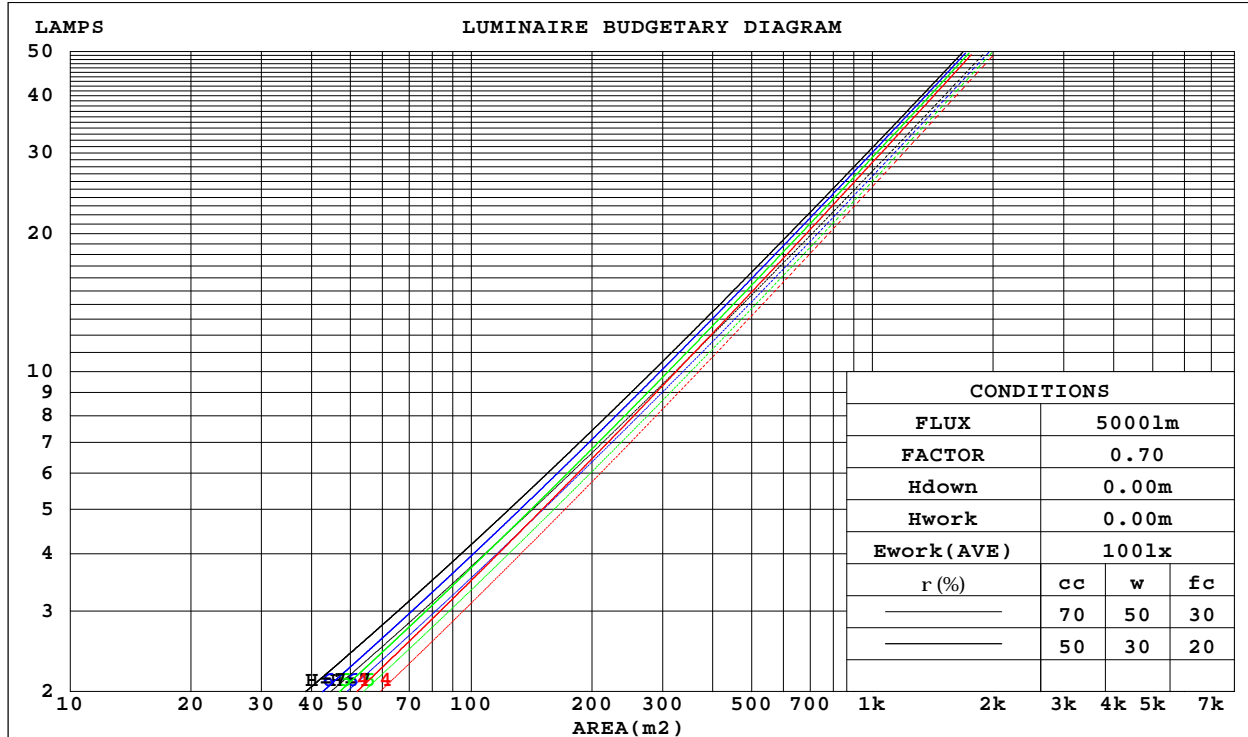
C Range: 0 - 360DEG
 C Interval: 10.0DEG
 Test Speed: HIGH
 Temperature:25.3DEG
 Operators:01
 Test Date:2017-11-16

g Range: 0 - 90DEG
 Interval: 1.0DEG
 Test System:EVERFINE GO-2000B_V1 SYSTEM V2.0.279
 Humidity:65.0%
 Test Distance:8.989m [K=1.0000]
 Remarks:

CU AND LUMINAIRE BUDGETARY ESTIMATE DIAGRAM

Test:U:230.6V I:0.0287A P:5.770W PF:0.8723 Lamp Flux:627.55x1 lm		
NAME: 5RS063-6000K	TYPE:	WEIGHT:
SPEC.:	DIM.:	SERIAL No.:001
MFR.: Suzhou Radiant Lighting Technology Co.,Ltd	SUR.:	PROTECTION ANGLE:

r _{cc}	80%			70%			50%			30%			10%			0
r _w	50%	30%	10%	50%	30%	10%	50%	30%	10%	50%	30%	10%	50%	30%	10%	0
r _{fc}	20%			20%			20%			20%			20%			0
RCR	RCR:Room Cavity Ratio						Coefficients of Utilization(CU)									
0.0	1.19	1.19	1.19	1.16	1.16	1.16	1.11	1.11	1.11	1.06	1.06	1.06	1.02	1.02	1.02	1.00
1.0	1.11	1.08	1.06	1.08	1.06	1.04	1.04	1.03	1.01	1.01	.99	.98	.97	.96	.95	.93
2.0	1.03	.99	.96	1.01	.98	.95	.98	.95	.93	.95	.93	.91	.92	.90	.89	.87
3.0	.96	.92	.88	.95	.91	.87	.92	.89	.86	.90	.87	.84	.88	.85	.83	.81
4.0	.91	.85	.81	.89	.84	.81	.87	.83	.80	.85	.82	.79	.83	.80	.78	.76
5.0	.85	.80	.76	.84	.79	.75	.83	.78	.75	.81	.77	.74	.79	.76	.73	.72
6.0	.81	.75	.71	.80	.75	.71	.78	.74	.70	.77	.73	.70	.76	.72	.69	.68
7.0	.76	.71	.67	.76	.70	.67	.75	.70	.66	.73	.69	.66	.72	.68	.66	.64
8.0	.73	.67	.63	.72	.67	.63	.71	.66	.63	.70	.66	.63	.69	.65	.62	.61
9.0	.69	.64	.60	.69	.64	.60	.68	.63	.60	.67	.63	.59	.66	.62	.59	.58
10.0	.66	.61	.57	.66	.61	.57	.65	.60	.57	.64	.60	.57	.63	.59	.57	.55



C Range: 0 - 360DEG
 C Interval: 10.0DEG
 Test Speed: HIGH
 Temperature:25.3DEG
 Operators:01
 Test Date:2017-11-16

Range: 0 - 90DEG
 Interval: 1.0DEG
 Test System:EVERFINE GO-2000B_V1 SYSTEM V2.0.279
 Humidity:65.0%
 Test Distance:8.989m [K=1.0000]
 Remarks:

WEC AND CCEC

Test:U:230.6V I:0.0287A P:5.770W PF:0.8723 Lamp Flux:627.55x1 lm		
NAME: 5RS063-6000K	TYPE:	WEIGHT:
SPEC.:	DIM.:	SERIAL No.:001
MFR.: Suzhou Radiant Lighting Technology Co.,Ltd	SUR.:	PROTECTION ANGLE:

rcc	80%			70%			50%			30%			10%			0
rw	50%	30%	10%	50%	30%	10%	50%	30%	10%	50%	30%	10%	50%	30%	10%	0
rfc	20%			20%			20%			20%			20%			0
RCR	RCR:Room Cavity Ratio						Wall Exitance Coefficients(WEC)									
0.0																
1.0	.180	.102	.032	.173	.099	.031	.161	.092	.029	.149	.086	.028	.138	.080	.026	
2.0	.171	.093	.029	.165	.091	.028	.154	.086	.027	.145	.081	.025	.135	.077	.024	
3.0	.161	.086	.026	.156	.084	.025	.147	.080	.024	.139	.076	.023	.131	.072	.022	
4.0	.152	.079	.023	.147	.077	.023	.140	.074	.022	.132	.071	.021	.126	.068	.021	
5.0	.143	.073	.021	.140	.072	.021	.133	.069	.020	.127	.067	.020	.121	.065	.019	
6.0	.136	.068	.019	.133	.067	.019	.127	.065	.019	.121	.063	.019	.116	.061	.018	
7.0	.129	.064	.018	.126	.063	.018	.121	.061	.018	.116	.059	.017	.111	.058	.017	
8.0	.123	.060	.017	.120	.059	.017	.116	.058	.016	.111	.056	.016	.107	.055	.016	
9.0	.117	.057	.016	.115	.056	.016	.111	.055	.016	.107	.054	.015	.103	.052	.015	
10.0	.112	.054	.015	.110	.053	.015	.106	.052	.015	.103	.051	.015	.099	.050	.014	

rcc	80%			70%			50%			30%			10%			0
rw	50%	30%	10%	50%	30%	10%	50%	30%	10%	50%	30%	10%	50%	30%	10%	0
rfc	20%			20%			20%			20%			20%			0
RCR	RCR:Room Cavity Ratio						Ceiling Cavity Exitance Coefficients(CCEC)									
0.0	.190	.190	.190	.163	.163	.163	.111	.111	.111	.064	.064	.064	.020	.020	.020	
1.0	.171	.157	.145	.147	.135	.124	.100	.093	.086	.058	.054	.050	.018	.017	.016	
2.0	.156	.132	.113	.134	.114	.097	.092	.079	.068	.053	.046	.040	.017	.015	.013	
3.0	.143	.114	.090	.123	.098	.078	.084	.068	.055	.049	.040	.032	.016	.013	.011	
4.0	.133	.099	.073	.114	.085	.063	.078	.060	.045	.045	.035	.026	.015	.011	.009	
5.0	.124	.087	.060	.106	.075	.052	.073	.053	.037	.042	.031	.022	.014	.010	.007	
6.0	.116	.078	.050	.100	.067	.044	.069	.047	.031	.040	.028	.018	.013	.009	.006	
7.0	.109	.070	.043	.094	.061	.037	.065	.043	.026	.038	.025	.016	.012	.008	.005	
8.0	.103	.064	.037	.089	.055	.032	.061	.039	.023	.036	.023	.014	.012	.008	.004	
9.0	.098	.058	.032	.084	.051	.028	.058	.036	.020	.034	.021	.012	.011	.007	.004	
10.0	.093	.054	.028	.080	.047	.024	.056	.033	.017	.032	.019	.010	.010	.006	.003	

C Range: 0 - 360DEG
 C Interval: 10.0DEG
 Test Speed: HIGH
 Temperature:25.3DEG
 Operators:01
 Test Date:2017-11-16

g Range: 0 - 90DEG
 Interval: 1.0DEG
 Test System:EVERFINE GO-2000B_V1 SYSTEM V2.0.279
 Humidity:65.0%
 Test Distance:8.989m [K=1.0000]
 Remarks:

Uncorrected UGR Table

Test:U:230.6V I:0.0287A P:5.770W PF:0.8723 Lamp Flux:627.55x1 lm										
NAME: 5RS063-6000K					TYPE:			WEIGHT:		
SPEC.:					DIM.:			SERIAL No.:001		
MFR.: Suzhou Radiant Lighting Technology Co.,Ltd					SUR.:			PROTECTION ANGLE:		
ceiling/cavity	0.7	0.7	0.5	0.5	0.3	0.7	0.7	0.5	0.5	0.3
walls	0.5	0.3	0.5	0.3	0.3	0.5	0.3	0.5	0.3	0.3
working plane	0.2	0.2	0.2	0.2	0.2	0.2	0.2	0.2	0.2	0.2
Room dimensions	Viewed crosswise					Viewed endwise				
x = 2H y = 2H	21.2	22.1	21.4	22.3	22.4	21.4	22.3	21.6	22.5	22.6
3H	21.7	22.5	21.9	22.7	22.9	21.9	22.7	22.2	22.9	23.1
4H	21.9	22.7	22.2	22.9	23.1	22.2	23.0	22.4	23.2	23.4
6H	22.0	22.8	22.3	23.0	23.3	22.4	23.1	22.7	23.4	23.6
8H	22.0	22.8	22.3	23.0	23.3	22.4	23.1	22.7	23.4	23.6
12H	22.0	22.7	22.3	23.0	23.3	22.4	23.1	22.7	23.4	23.7
4H 2H	21.4	22.2	21.6	22.4	22.6	21.5	22.3	21.8	22.5	22.8
3H	22.1	22.8	22.4	23.0	23.3	22.2	22.9	22.5	23.2	23.5
4H	22.4	23.0	22.7	23.3	23.6	22.6	23.2	22.9	23.5	23.8
6H	22.6	23.2	23.0	23.5	23.8	22.9	23.4	23.2	23.8	24.1
8H	22.6	23.2	23.0	23.5	23.9	22.9	23.5	23.3	23.8	24.2
12H	22.7	23.1	23.1	23.5	23.9	23.0	23.5	23.4	23.8	24.2
8H 4H	22.5	23.0	22.9	23.4	23.8	22.7	23.2	23.1	23.6	23.9
6H	22.8	23.2	23.2	23.6	24.0	23.0	23.5	23.5	23.9	24.3
8H	22.9	23.3	23.3	23.7	24.1	23.2	23.5	23.6	24.0	24.4
12H	22.9	23.3	23.4	23.7	24.2	23.2	23.6	23.7	24.0	24.5
12H 4H	22.5	23.0	22.9	23.3	23.7	22.7	23.1	23.1	23.5	23.9
6H	22.8	23.2	23.2	23.6	24.0	23.0	23.4	23.5	23.8	24.3
8H	22.9	23.2	23.4	23.7	24.1	23.2	23.5	23.6	24.0	24.4
Variations with the observer position at spacings:										
S = 1.0H	+ 0.9 / - 1.1					+ 1.1 / - 1.1				
1.5H	+ 1.6 / - 1.0					+ 2.0 / - 0.8				
2.0H	+ 1.4 / - 0.9					+ 1.4 / - 0.7				

CIE Pub.117 Corrected 627.5 lm Total Lamp Luminous Flux.(8log(F/F0) = -1.6)

C Range: 0 - 360DEG
 C Interval: 10.0DEG
 Test Speed: HIGH
 Temperature:25.3DEG
 Operators:01
 Test Date:2017-11-16

g Range: 0 - 90DEG
 Interval: 1.0DEG
 Test System:EVERFINE GO-2000B_V1 SYSTEM V2.0.279
 Humidity:65.0%
 Test Distance:8.989m [K=1.0000]
 Remarks:

UTILIZATION FACTORS TABLE

Test:U:230.6V I:0.0287A P:5.770W PF:0.8723 Lamp Flux:627.55x1 lm		
NAME: 5RS063-6000K	TYPE:	WEIGHT:
SPEC.:	DIM.:	SERIAL No.:001
MFR.: Suzhou Radiant Lighting Technology Co.,Ltd	SUR.:	PROTECTION ANGLE:

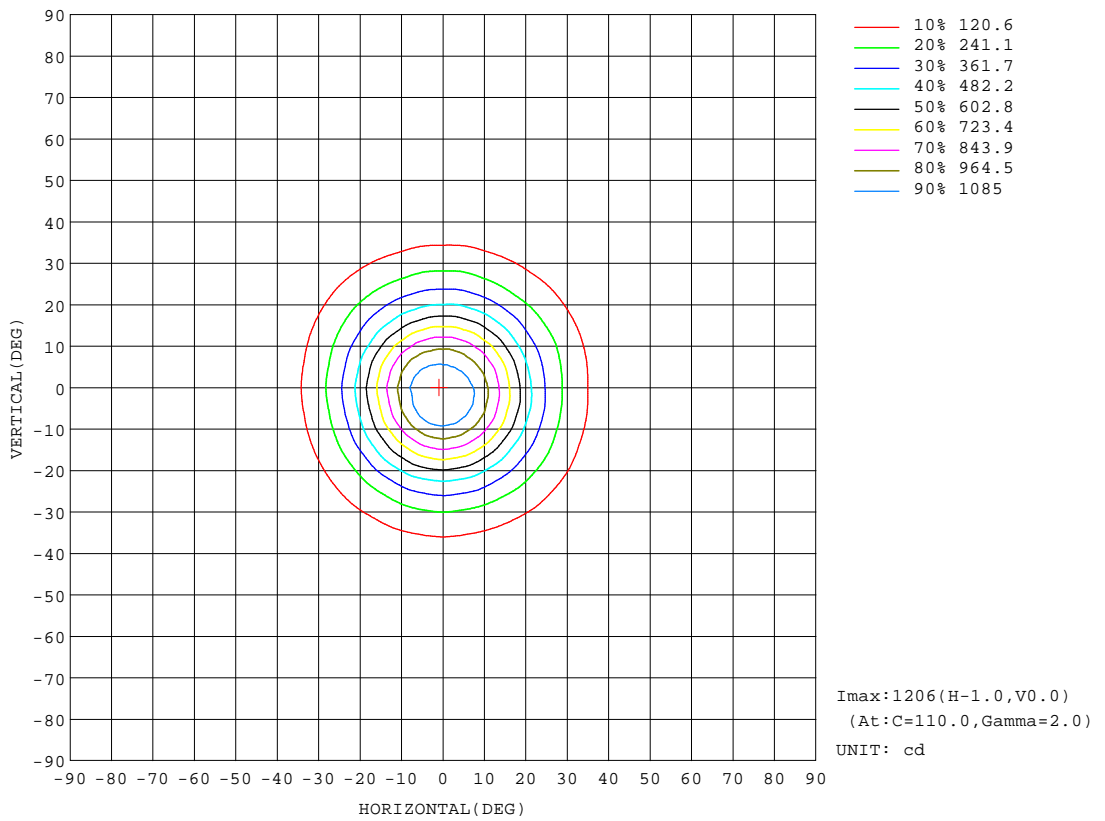
REFLECTANCE										
Ceiling	0.8	0.8	0.8	0.7	0.7	0.7	0.5	0.5	0.5	0
Walls	0.7	0.5	0.3	0.7	0.5	0.3	0.7	0.5	0.3	0
Working plane	0.2	0.2	0.2	0.2	0.2	0.2	0.2	0.2	0.2	0
ROOM INDEX	UTILIZATION FACTORS(PERCENT) k(RI) x RCR = 5									
k = 0.60	84	78	73	84	77	73	83	77	73	69
0.80	92	86	82	91	85	81	90	85	81	77
1.00	97	91	87	96	90	87	94	90	86	82
1.25	101	95	92	100	95	91	98	94	90	86
1.50	104	99	95	103	98	95	101	97	94	89
2.00	107	103	99	106	102	98	103	100	97	91
2.50	109	105	102	107	104	101	104	101	99	93
3.00	111	107	104	109	106	103	106	103	101	94
4.00	113	110	108	111	108	106	107	105	103	96
5.00	114	112	110	112	110	108	108	107	105	97
ROOM INDEX	UF(total)									Direct
According to DIN EN 13032-2 2004			Suspended				SHRNOM = 1.25			

C Range: 0 - 360DEG
 C Interval: 10.0DEG
 Test Speed: HIGH
 Temperature:25.3DEG
 Operators:01
 Test Date:2017-11-16

g Range: 0 - 90DEG
 Interval: 1.0DEG
 Test System:EVERFINE GO-2000B_V1 SYSTEM V2.0.279
 Humidity:65.0%
 Test Distance:8.989m [K=1.0000]
 Remarks:

ISOCANDELA DIAGRAM

Test:U:230.6V I:0.0287A P:5.770W PF:0.8723 Lamp Flux:627.55x1 lm		
NAME: 5RS063-6000K	TYPE:	WEIGHT:
SPEC.:	DIM.:	SERIAL No.:001
MFR.: Suzhou Radiant Lighting Technology Co.,Ltd	SUR.:	PROTECTION ANGLE:



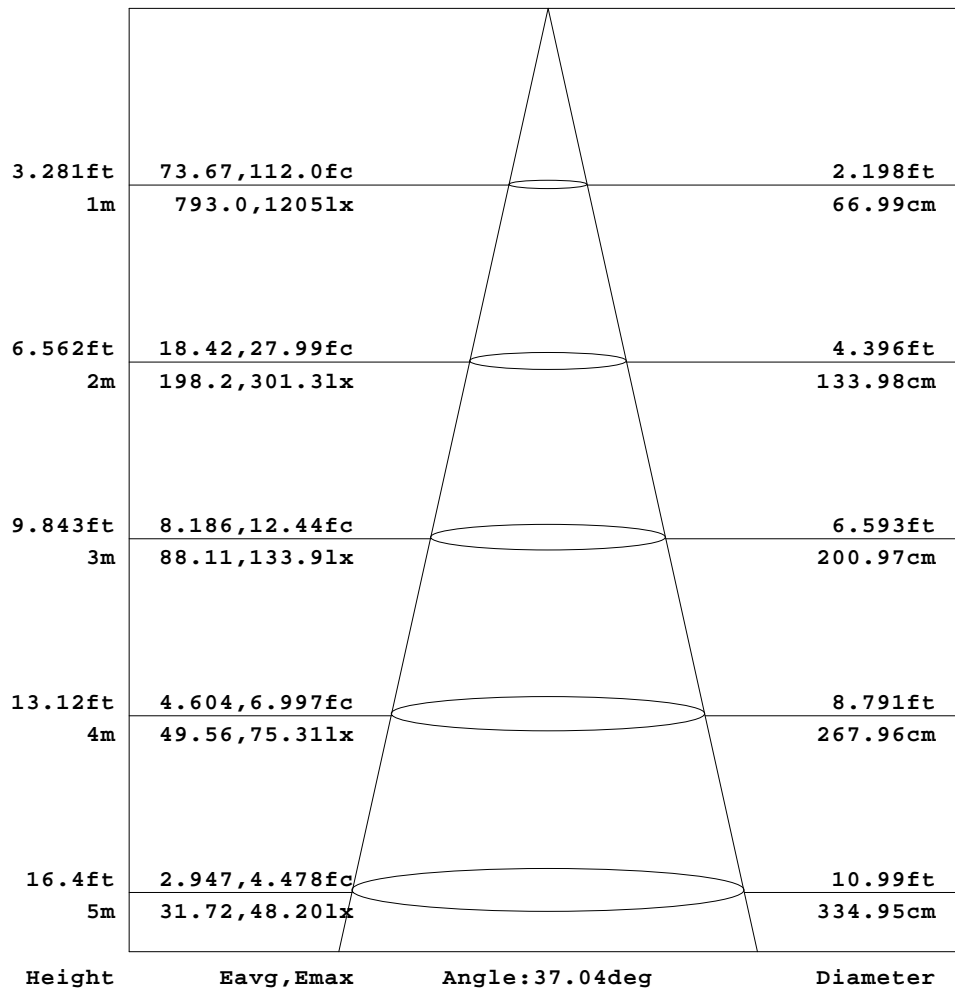
C Range: 0 - 360DEG
 C Interval: 10.0DEG
 Test Speed: HIGH
 Temperature:25.3DEG
 Operators:01
 Test Date:2017-11-16

Range: 0 - 90DEG
 Interval: 1.0DEG
 Test System:EVERFINE GO-2000B_V1 SYSTEM V2.0.279
 Humidity:65.0%
 Test Distance:8.989m [K=1.0000]
 Remarks:

AAI Figure

Test:U:230.6V I:0.0287A P:5.770W PF:0.8723 Lamp Flux:627.55x1 lm		
NAME: 5RS063-6000K	TYPE:	WEIGHT:
SPEC.:	DIM.:	SERIAL No.:001
MFR.: Suzhou Radiant Lighting Technology Co.,Ltd	SUR.:	PROTECTION ANGLE:

Flux out:295.4 lm



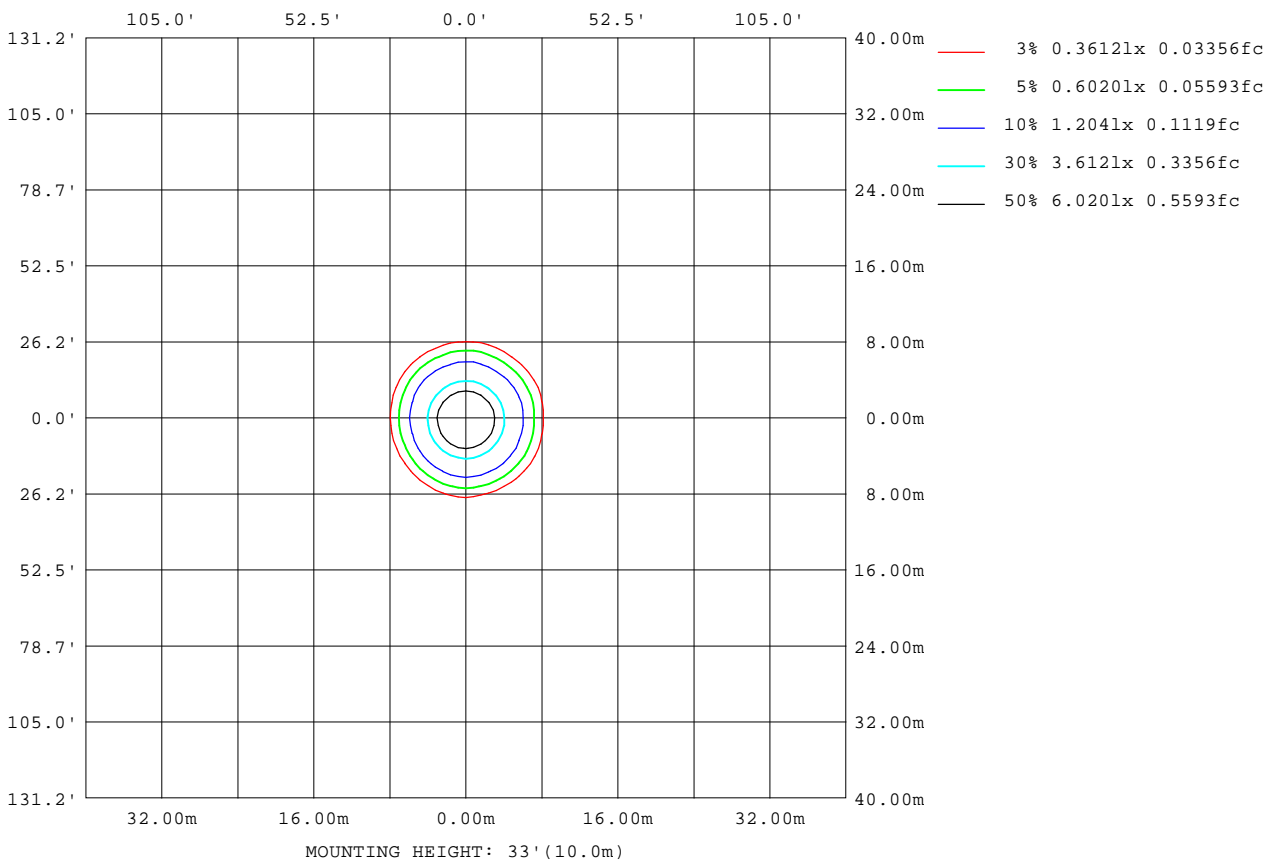
Note:The Curves indicate the illuminated area and the average illumination when the luminaire is at different distance.

C Range: 0 - 360DEG
 C Interval: 10.0DEG
 Test Speed: HIGH
 Temperature:25.3DEG
 Operators:01
 Test Date:2017-11-16

g Range: 0 - 90DEG
 Interval: 1.0DEG
 Test System:EVERFINE GO-2000B_V1 SYSTEM V2.0.279
 Humidity:65.0%
 Test Distance:8.989m [K=1.0000]
 Remarks:

ISOLUX DIAGRAM

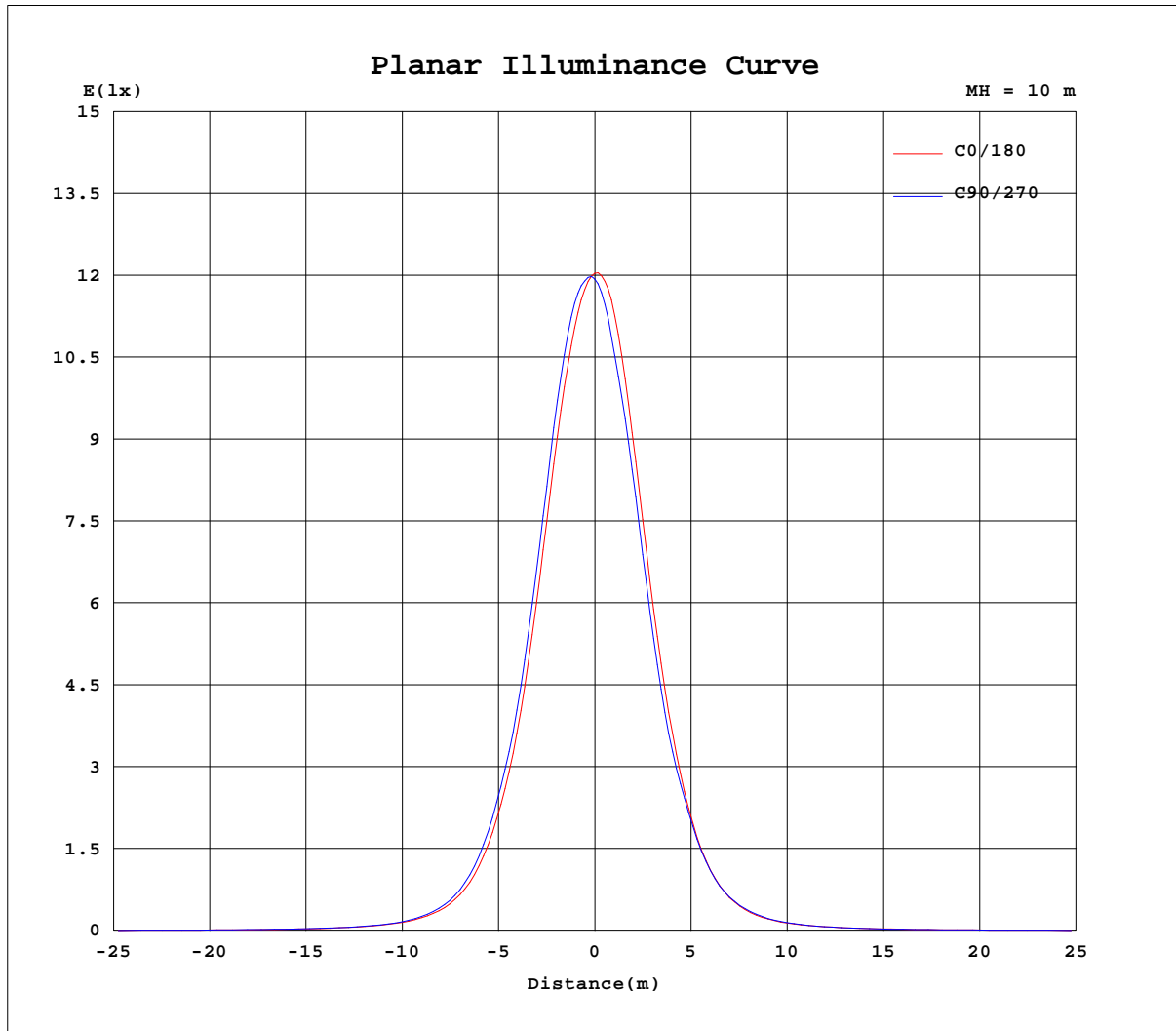
Test:U:230.6V I:0.0287A P:5.770W PF:0.8723 Lamp Flux:627.55x1 lm		
NAME: 5RS063-6000K	TYPE:	WEIGHT:
SPEC.:	DIM.:	SERIAL No.:001
MFR.: Suzhou Radiant Lighting Technology Co.,Ltd	SUR.:	PROTECTION ANGLE:



C Range: 0 - 360DEG
 C Interval: 10.0DEG
 Test Speed: HIGH
 Temperature:25.3DEG
 Operators:01
 Test Date:2017-11-16

g Range: 0 - 90DEG
 Interval: 1.0DEG
 Test System:EVERFINE GO-2000B_V1 SYSTEM V2.0.279
 Humidity:65.0%
 Test Distance:8.989m [K=1.0000]
 Remarks:

Planar Illuminance Curve



C Range: 0 - 360DEG
 C Interval: 10.0DEG
 Test Speed: HIGH
 Temperature: 25.3DEG
 Operators: 01
 Test Date: 2017-11-16

Range: 0 - 90DEG
 Interval: 1.0DEG
 Test System: EVERFINE GO-2000B_V1 SYSTEM V2.0.279
 Humidity: 65.0%
 Test Distance: 8.989m [K=1.0000]
 Remarks:

LUMINOUS DISTRIBUTION INTENSITY DATA

Test:U:230.6V I:0.0287A P:5.770W PF:0.8723 Lamp Flux:627.55x1 lm		
NAME: 5RS063-6000K	TYPE:	WEIGHT:
SPEC.:	DIM.:	SERIAL No.:001
MFR.: Suzhou Radiant Lighting Technology Co.,Ltd	SUR.:	PROTECTION ANGLE:

Table--1

UNIT: cd

C(DEG) g (DEG)	0	10	20	30	40	50	60	70	80	90	100	110	120	130	140	150	160	170	180
0	1195	1195	1195	1195	1195	1195	1195	1195	1195	1195	1195	1195	1195	1195	1195	1195	1195	1195	1195
5	1137	1144	1148	1157	1163	1170	1172	1177	1177	1183	1184	1186	1183	1183	1175	1173	1164	1161	1159
10	991	1002	1006	1023	1028	1040	1043	1057	1054	1063	1058	1061	1050	1047	1032	1031	1013	1007	1001
15	768	785	788	809	812	825	825	837	834	844	835	835	818	815	798	795	774	768	768
20	535	551	550	565	565	582	582	595	590	599	594	597	583	580	560	555	536	534	531
25	347	358	363	374	374	386	386	397	392	398	390	393	380	378	361	358	344	340	339
30	210	215	220	231	234	239	235	238	238	244	238	235	222	218	209	204	198	194	196
35	119	123	124	130	130	134	131	132	133	137	133	132	124	122	116	113	111	108	109
40	69.7	72.0	73.3	76.2	76.0	76.4	73.7	74.2	74.7	77.7	76.6	75.1	70.5	69.2	65.6	65.1	63.6	62.4	63.0
45	43.2	44.4	45.1	46.6	46.4	46.1	44.3	44.7	44.7	46.5	46.1	45.3	42.7	42.2	40.6	40.5	39.5	39.0	39.0
50	29.0	29.5	29.8	30.6	30.4	30.4	29.7	29.9	29.5	30.3	29.9	29.8	28.7	28.3	27.5	27.2	26.8	26.5	26.8
55	20.6	21.0	21.0	21.6	21.6	21.8	21.5	21.6	21.3	21.5	21.3	21.3	20.8	20.5	19.9	19.8	19.3	19.3	19.7
60	15.2	15.5	15.7	16.2	16.2	16.2	16.0	16.2	16.1	16.1	15.9	16.0	15.5	15.4	15.1	14.9	14.6	14.6	14.9
65	11.4	11.7	12.2	12.9	12.9	12.3	12.1	12.3	12.2	12.4	12.4	12.1	11.7	11.7	11.5	11.4	11.1	11.1	11.2
70	8.37	8.65	9.15	9.80	9.92	9.49	8.99	9.09	9.34	9.80	9.59	9.19	8.70	8.62	8.47	8.58	8.46	8.37	8.22
75	5.55	5.76	6.17	6.65	6.68	6.54	6.25	6.36	6.64	6.92	6.72	6.46	6.02	5.85	5.75	5.81	5.68	5.54	5.42
80	2.93	3.08	3.30	3.55	3.57	3.57	3.48	3.58	3.70	3.82	3.73	3.62	3.34	3.20	3.13	3.14	3.02	2.92	2.85
85	1.15	1.22	1.29	1.34	1.41	1.45	1.50	1.52	1.53	1.53	1.52	1.48	1.44	1.39	1.33	1.26	1.20	1.10	1.09
90	0.02	0.00	0.02	0.00	0.07	0.07	0.10	0.09	0.13	0.11	0.13	0.10	0.09	0.05	0.04	0.00	0.02	0.00	0.00

C Range: 0 - 360DEG
 C Interval: 10.0DEG
 Test Speed: HIGH
 Temperature:25.3DEG
 Operators:01
 Test Date:2017-11-16

g Range: 0 - 90DEG
 Interval: 1.0DEG
 Test System:EVERFINE GO-2000B_V1 SYSTEM V2.0.279
 Humidity:65.0%
 Test Distance:8.989m [K=1.0000]
 Remarks:

LUMINOUS DISTRIBUTION INTENSITY DATA

Test:U:230.6V I:0.0287A P:5.770W PF:0.8723 Lamp Flux:627.55x1 lm		
NAME: 5RS063-6000K	TYPE:	WEIGHT:
SPEC.:	DIM.:	SERIAL No.:001
MFR.: Suzhou Radiant Lighting Technology Co.,Ltd	SUR.:	PROTECTION ANGLE:

Table--2

UNIT: cd

C(DEG) g (DEG)	190	200	210	220	230	240	250	260	270	280	290	300	310	320	330	340	350		
0	1195	1195	1195	1195	1195	1195	1195	1195	1195	1195	1195	1195	1195	1195	1195	1195	1195		
5	1149	1144	1132	1128	1118	1116	1109	1109	1102	1103	1100	1107	1108	1115	1119	1128	1133		
10	984	986	973	972	955	951	938	938	936	943	939	947	947	958	964	979	986		
15	753	754	740	738	722	722	709	714	707	717	714	728	728	745	747	763	768		
20	516	515	501	502	488	489	482	485	483	493	489	499	500	511	513	524	528		
25	330	333	331	334	331	326	323	329	326	329	326	325	328	336	339	347	350		
30	191	196	199	200	199	194	190	197	195	200	193	193	194	203	208	218	215		
35	107	110	111	114	113	112	109	113	112	115	112	112	113	118	120	123	123		
40	62.2	64.9	66.6	67.9	67.1	65.9	64.8	66.6	66.5	67.7	66.8	66.9	67.7	70.6	72.8	74.0	72.7		
45	39.0	40.8	41.9	42.3	41.8	41.1	40.5	41.1	41.2	41.8	41.7	41.8	42.0	43.9	45.1	45.8	44.6		
50	26.9	27.8	28.4	28.6	28.0	27.7	27.4	27.6	27.6	28.0	28.0	28.2	28.3	29.2	29.8	30.2	29.5		
55	19.6	20.0	20.2	20.5	20.0	19.8	19.5	19.7	19.8	20.3	19.9	20.0	20.0	20.5	20.9	21.3	21.0		
60	14.7	14.9	15.2	15.5	15.0	14.7	14.5	14.7	15.4	15.7	15.0	14.7	14.8	15.3	16.1	16.3	15.6		
65	11.0	11.2	11.7	12.4	11.9	11.2	10.8	11.5	12.2	12.2	11.5	11.0	11.0	11.9	12.8	13.1	12.0		
70	7.95	8.17	8.61	8.98	8.60	8.18	7.82	8.32	8.72	8.95	8.33	7.97	8.00	8.79	9.48	9.70	8.98		
75	5.09	5.30	5.43	5.55	5.20	4.97	4.79	5.00	5.15	5.39	5.07	4.92	5.04	5.53	5.93	6.15	5.84		
80	2.65	2.67	2.68	2.69	2.53	2.44	2.40	2.42	2.42	2.53	2.47	2.48	2.56	2.73	2.88	3.06	3.00		
85	1.03	0.94	0.92	0.82	0.77	0.72	0.71	0.68	0.70	0.71	0.76	0.81	0.87	0.93	0.99	1.07	1.15		
90	0.00	0.00	0.00	0.00	0.00	0.00	0.01	0.00	0.01	0.00	0.01	0.00	0.00	0.00	0.00	0.00	0.01		

C Range: 0 - 360DEG
 C Interval: 10.0DEG
 Test Speed: HIGH
 Temperature:25.3DEG
 Operators:01
 Test Date:2017-11-16

g Range: 0 - 90DEG
 Interval: 1.0DEG
 Test System:EVERFINE GO-2000B_V1 SYSTEM V2.0.279
 Humidity:65.0%
 Test Distance:8.989m [K=1.0000]
 Remarks: